

Product datasheet for **TA342173**

PSMD1 Rabbit Polyclonal Antibody

Product data:

Product Type:	Primary Antibodies
Applications:	WB
Recommended Dilution:	WB
Reactivity:	Human
Host:	Rabbit
Isotype:	IgG
Clonality:	Polyclonal
Immunogen:	The immunogen for anti-PSMD1 antibody: synthetic peptide directed towards the N terminal of human PSMD1. Synthetic peptide located within the following region: HYTKQCVENADLPEGEKKPIDQRLEGIVNKMFRCLDDHKYKQAIGIALE
Formulation:	Liquid. Purified antibody supplied in 1x PBS buffer with 0.09% (w/v) sodium azide and 2% sucrose. <i>Note that this product is shipped as lyophilized powder to China customers.</i>
Concentration:	lot specific
Purification:	Affinity Purified
Conjugation:	Unconjugated
Storage:	Store at -20°C as received.
Stability:	Stable for 12 months from date of receipt.
Predicted Protein Size:	106 kDa
Gene Name:	proteasome 26S subunit, non-ATPase 1
Database Link:	NP_002798 Entrez Gene 5707 Human Q99460



[View online »](#)

Background:

The 26S proteasome is a multicatalytic proteinase complex with a highly ordered structure composed of 2 complexes, a 20S core and a 19S regulator. The 20S core is composed of 4 rings of 28 non-identical subunits; 2 rings are composed of 7 alpha subunits and 2 rings are composed of 7 beta subunits. The 19S regulator is composed of a base, which contains 6 ATPase subunits and 2 non-ATPase subunits, and a lid, which contains up to 10 non-ATPase subunits. Proteasomes are distributed throughout eukaryotic cells at a high concentration and cleave peptides in an ATP/ubiquitin-dependent process in a non-lysosomal pathway. An essential function of a modified proteasome, The immunoproteasome, is The processing of class I MHC peptides. This gene encodes The largest non-ATPase subunit of The 19S regulator lid, which is responsible for substrate recognition and binding. Alternatively spliced transcript variants have been found for This gene. [provided by RefSeq, Jul 2010]

Synonyms:

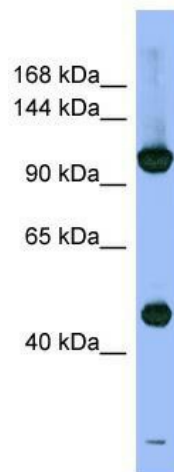
P112; Rpn2; S1

Note:

Immunogen Sequence Homology: Dog: 100%; Pig: 100%; Rat: 100%; Horse: 100%; Human: 100%; Mouse: 100%; Bovine: 100%; Rabbit: 100%; Guinea pig: 100%

Protein Pathways:

Proteasome

Product images:

WB Suggested Anti-PSMD1 Antibody Titration:
0.2-1 ug/ml; ELISA Titer: 1:62500; Positive Control:
Human Stomach