

Product datasheet for **TA342172**

S4 (PSMC1) Rabbit Polyclonal Antibody

Product data:

Product Type:	Primary Antibodies
Applications:	WB
Recommended Dilution:	WB
Reactivity:	Mouse
Host:	Rabbit
Isotype:	IgG
Clonality:	Polyclonal
Immunogen:	The immunogen for anti-Psmc1 antibody: synthetic peptide corresponding to a region of Mouse. Synthetic peptide located within the following region: ELFRVAEEHAPSIVFIDEIDAIGTKRYDSNSGGEREIQRTMLELLNQLDG
Formulation:	Liquid. Purified antibody supplied in 1x PBS buffer with 0.09% (w/v) sodium azide and 2% sucrose. <i>Note that this product is shipped as lyophilized powder to China customers.</i>
Concentration:	lot specific
Purification:	Affinity Purified
Conjugation:	Unconjugated
Storage:	Store at -20°C as received.
Stability:	Stable for 12 months from date of receipt.
Predicted Protein Size:	48 kDa
Gene Name:	proteasome 26S subunit, ATPase 1
Database Link:	NP_002793 Entrez Gene 19179 Mouse P62191
Background:	The 26S protease is involved inThe ATP-dependent degradation of ubiquitinated proteins.The regulatory (or ATPase) complex confers ATP dependency and substrate specificity toThe 26S complex.
Synonyms:	P26S4; p56; S4

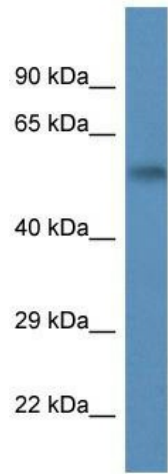


[View online »](#)

Note: Immunogen Sequence Homology: Dog: 100%; Pig: 100%; Rat: 100%; Horse: 100%; Human: 100%; Mouse: 100%; Yeast: 100%; Bovine: 100%; Rabbit: 100%; Zebrafish: 100%; Guinea pig: 100%

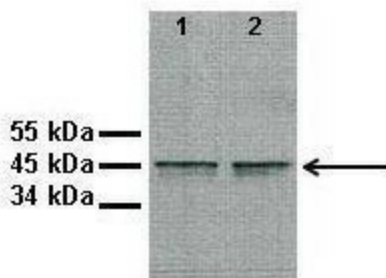
Protein Pathways: Proteasome

Product images:



PSMC1

WB Suggested Anti-Psmc1 Antibody; Titration: 1.0 ug/ml; Positive Control: Mouse Brain



Lanes ; 1: 10ug proteasome fraction from C57B1/6J mouse brain, 2: 10ug proteasome fraction from BLAB/C mouse brain; Primary Antibody Dilution ; 1:500; Secondary Antibody ; Anti-rabbit HRP; Secondary Antibody Dilution ; 1:5000; Gene Name ; Psmc1; Subm