

Product datasheet for **TA342170**

Proteasome 20S beta 6 (PSMB6) Rabbit Polyclonal Antibody

Product data:

Product Type:	Primary Antibodies
Applications:	WB
Recommended Dilution:	WB
Reactivity:	Human
Host:	Rabbit
Isotype:	IgG
Clonality:	Polyclonal
Immunogen:	The immunogen for anti-PSMB6 antibody: synthetic peptide directed towards the N terminal of human PSMB6. Synthetic peptide located within the following region: TTIMAVQFDGGVVLGADSRRTTGSYIANRVTDKLTPIHDRIFCCRS GSAA
Formulation:	Liquid. Purified antibody supplied in 1x PBS buffer with 0.09% (w/v) sodium azide and 2% sucrose. <i>Note that this product is shipped as lyophilized powder to China customers.</i>
Concentration:	lot specific
Purification:	Affinity Purified
Conjugation:	Unconjugated
Storage:	Store at -20°C as received.
Stability:	Stable for 12 months from date of receipt.
Predicted Protein Size:	25 kDa
Gene Name:	proteasome subunit beta 6
Database Link:	NP_002789 Entrez Gene 5694 Human P28072



[View online »](#)

Background: The proteasome is a multicatalytic proteinase complex with a highly ordered ring-shaped 20S core structure. The core structure is composed of 4 rings of 28 non-identical subunits; 2 rings are composed of 7 alpha subunits and 2 rings are composed of 7 beta subunits. Proteasomes are distributed throughout eukaryotic cells at a high concentration and cleave peptides in an ATP/ubiquitin-dependent process in a non-lysosomal pathway. The encoded protein is a member of the proteasome B-type family, also known as the T1B family, and is a 20S core beta subunit in the proteasome. Alternatively spliced transcript variants encoding multiple isoforms have been observed for this gene. [provided by RefSeq, Jul 2012]

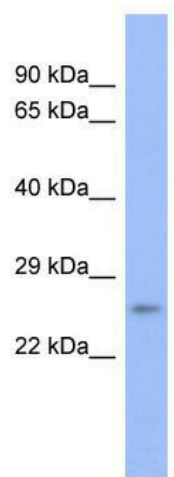
Synonyms: DELTA; LMPY; Y

Note: Immunogen Sequence Homology: Dog: 100%; Pig: 100%; Rat: 100%; Horse: 100%; Human: 100%; Mouse: 100%; Yeast: 100%; Bovine: 100%; Rabbit: 100%; Guinea pig: 100%; Zebrafish: 93%

Protein Families: Druggable Genome, Protease

Protein Pathways: Proteasome

Product images:



WB Suggested Anti-PSMB6 Antibody Titration:
0.2-1 ug/ml; ELISA Titer: 1:62500; Positive Control:
Jurkat cell lysate PSMB6 is supported by BioGPS
gene expression data to be expressed in Jurkat