

Product datasheet for **TA342169**

PSMB5 Rabbit Polyclonal Antibody

Product data:

Product Type:	Primary Antibodies
Applications:	WB
Recommended Dilution:	WB
Reactivity:	Human
Host:	Rabbit
Isotype:	IgG
Clonality:	Polyclonal
Immunogen:	The immunogen for anti-PSMB5 antibody: synthetic peptide directed towards the middle region of human PSMB5. Synthetic peptide located within the following region: IVAADSRATAGAYIASQTVKKVIEINPYLLGTMAGGAADCSFWERLLARQ
Formulation:	Liquid. Purified antibody supplied in 1x PBS buffer with 0.09% (w/v) sodium azide and 2% sucrose. <i>Note that this product is shipped as lyophilized powder to China customers.</i>
Concentration:	lot specific
Purification:	Affinity Purified
Conjugation:	Unconjugated
Storage:	Store at -20°C as received.
Stability:	Stable for 12 months from date of receipt.
Predicted Protein Size:	28 kDa
Gene Name:	proteasome subunit beta 5
Database Link:	NP_002788 Entrez Gene 5693 Human P28074



[View online »](#)

Background:

The proteasome is a multicatalytic proteinase complex with a highly ordered ring-shaped 20S core structure. The core structure is composed of 4 rings of 28 non-identical subunits; 2 rings are composed of 7 alpha subunits and 2 rings are composed of 7 beta subunits. Proteasomes are distributed throughout eukaryotic cells at a high concentration and cleave peptides in an ATP/ubiquitin-dependent process in a non-lysosomal pathway. An essential function of a modified proteasome, The immunoproteasome, is The processing of class I MHC peptides. This gene encodes a member of The proteasome B-type family, also known as The T1B family, that is a 20S core beta subunit in The proteasome. This catalytic subunit is not present in The immunoproteasome and is replaced by catalytic subunit 3i (proteasome beta 8 subunit). Multiple transcript variants encoding different isoforms have been found for This gene. [provided by RefSeq, Jan 2009]

Synonyms:

LMPX; MB1; X

Note:

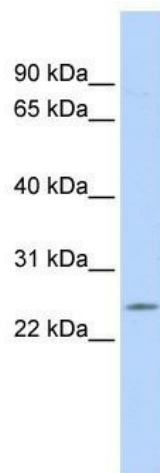
Immunogen Sequence Homology: Dog: 100%; Pig: 100%; Rat: 100%; Horse: 100%; Human: 100%; Mouse: 100%; Bovine: 100%; Rabbit: 100%; Zebrafish: 100%; Guinea pig: 100%; Yeast: 92%

Protein Families:

Protease

Protein Pathways:

Proteasome

Product images:

WB Suggested Anti-PSMB5 Antibody Titration: 0.2-1 ug/ml; ELISA Titer: 1:62500; Positive Control: MCF7 cell lysate PSMB5 is supported by BioGPS gene expression data to be expressed in MCF7