

Product datasheet for **TA342164**

Proteasome subunit beta type 2 (PSMB2) Rabbit Polyclonal Antibody

Product data:

Product Type:	Primary Antibodies
Applications:	WB
Recommended Dilution:	WB
Reactivity:	Human
Host:	Rabbit
Isotype:	IgG
Clonality:	Polyclonal
Immunogen:	The immunogen for anti-PSMB2 antibody: synthetic peptide directed towards the middle region of human PSMB2. Synthetic peptide located within the following region: YDEHEGPALYYMDYLAALAKAPFAAHGYGAFLTLSILDRIYPTISRERA
Formulation:	Liquid. Purified antibody supplied in 1x PBS buffer with 0.09% (w/v) sodium azide and 2% sucrose. <i>Note that this product is shipped as lyophilized powder to China customers.</i>
Concentration:	lot specific
Purification:	Affinity Purified
Conjugation:	Unconjugated
Storage:	Store at -20°C as received.
Stability:	Stable for 12 months from date of receipt.
Predicted Protein Size:	23 kDa
Gene Name:	proteasome subunit beta 2
Database Link:	NP_002785 Entrez Gene 5690 Human P49721



[View online »](#)

Background:

The proteasome is a multicatalytic proteinase complex with a highly ordered ring-shaped 20S core structure. The core structure is composed of 4 rings of 28 non-identical subunits; 2 rings are composed of 7 alpha subunits and 2 rings are composed of 7 beta subunits. Proteasomes are distributed throughout eukaryotic cells at a high concentration and cleave peptides in an ATP/ubiquitin-dependent process in a non-lysosomal pathway. An essential function of a modified proteasome, The immunoproteasome, is The processing of class I MHC peptides. This gene encodes a member of The proteasome B-type family, also known as The T1B family, that is a 20S core beta subunit. Multiple alternatively spliced transcript variants encoding distinct isoforms have been found for This gene. [provided by RefSeq, Dec 2010]

Synonyms:

HC7-I

Note:

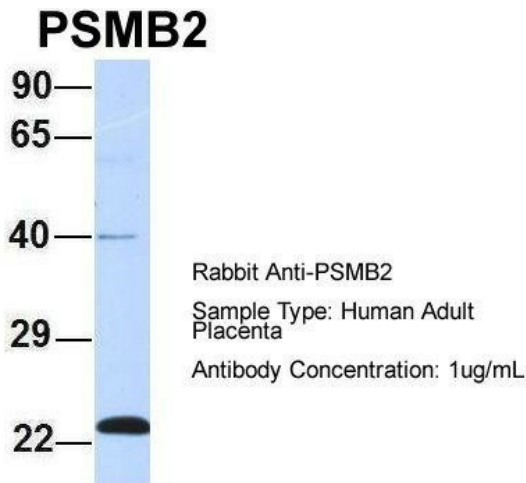
Immunogen Sequence Homology: Dog: 100%; Rat: 100%; Horse: 100%; Human: 100%; Mouse: 100%; Bovine: 100%; Pig: 93%; Rabbit: 93%; Guinea pig: 93%

Protein Families:

Druggable Genome, Protease

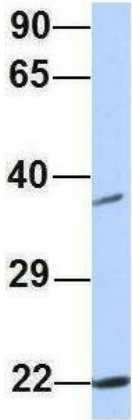
Protein Pathways:

Proteasome

Product images:


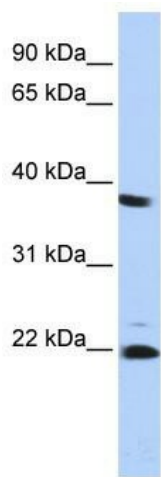
Host: Rabbit; Target Name: PSMB2; Sample Tissue: Human Adult Placenta; Antibody Dilution: 1.0 ug/ml

PSMB2



Rabbit Anti-PSMB2
 Sample Type: Human HeLa
 Antibody Concentration: 1ug/mL

Host: Rabbit; Target Name: PSMB2; Sample Tissue: HeLa; Antibody Dilution: 1.0 ug/ml; PSMB2 is strongly supported by BioGPS gene expression data to be expressed in Human HeLa cells



WB Suggested Anti-PSMB2 Antibody Titration: 0.2-1 ug/ml; ELISA Titer: 1:312500; Positive Control: HepG2 cell lysate PSMB2 is supported by BioGPS gene expression data to be expressed in HepG2

PSMB2



Rabbit Anti-PSMB2
 Sample Type: Human 293T
 Antibody Concentration: 1ug/mL

Host: Rabbit; Target Name: PSMB2; Sample Tissue: 293T; Antibody Dilution: 1.0 ug/ml; PSMB2 is supported by BioGPS gene expression data to be expressed in HEK293T