

## Product datasheet for **TA342160**

### PSMA2 Rabbit Polyclonal Antibody

#### Product data:

Product Type:	Primary Antibodies
Applications:	WB
Recommended Dilution:	WB
Reactivity:	Human
Host:	Rabbit
Isotype:	IgG
Clonality:	Polyclonal
Immunogen:	The immunogen for anti-PSMA2 antibody: synthetic peptide directed towards the N terminal of human PSMA2. Synthetic peptide located within the following region: VGIKAANGVVLATEKKQKSILYDERSVHKVEPITKHIGLVYSGMGPDYRV
Formulation:	Liquid. Purified antibody supplied in 1x PBS buffer with 0.09% (w/v) sodium azide and 2% sucrose. <i>Note that this product is shipped as lyophilized powder to China customers.</i>
Concentration:	lot specific
Purification:	Affinity Purified
Conjugation:	Unconjugated
Storage:	Store at -20°C as received.
Stability:	Stable for 12 months from date of receipt.
Predicted Protein Size:	26 kDa
Gene Name:	proteasome subunit alpha 2
Database Link:	<a href="#">NP_002778</a> <a href="#">Entrez Gene 5683 Human P25787</a>



[View online »](#)

**Background:** The proteasome is a multicatalytic proteinase complex with a highly ordered ring-shaped 20S core structure. The core structure is composed of 4 rings of 28 non-identical subunits; 2 rings are composed of 7 alpha subunits and 2 rings are composed of 7 beta subunits. Proteasomes are distributed throughout eukaryotic cells at a high concentration and cleave peptides in an ATP/ubiquitin-dependent process in a non-lysosomal pathway. An essential function of a modified proteasome, The immunoproteasome, is The processing of class I MHC peptides. This gene encodes a member of The peptidase T1A family, that is a 20S core alpha subunit. [provided by RefSeq, Jul 2008]

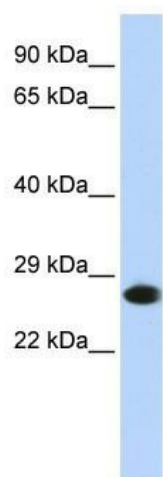
**Synonyms:** HC3; MU; PMSA2; PSC2

**Note:** Immunogen Sequence Homology: Dog: 100%; Pig: 100%; Rat: 100%; Horse: 100%; Human: 100%; Mouse: 100%; Sheep: 100%; Bovine: 100%; Rabbit: 100%; Guinea pig: 100%; Zebrafish: 93%

**Protein Families:** Druggable Genome, Protease

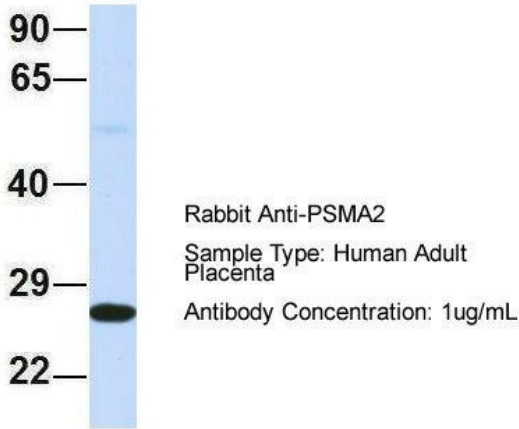
**Protein Pathways:** Proteasome

### Product images:



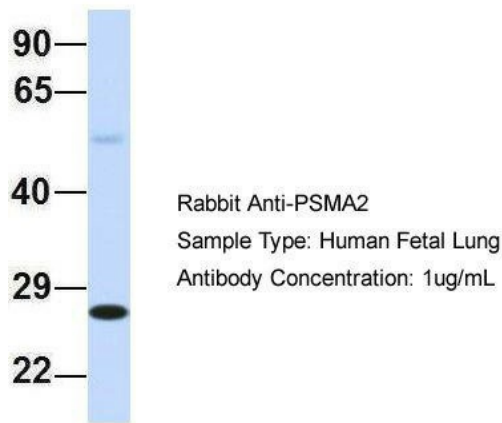
WB Suggested Anti-PSMA2 Antibody Titration:  
0.2-1 ug/ml; ELISA Titer: 1:312500; Positive  
Control: HepG2 cell lysate

### PSMA2



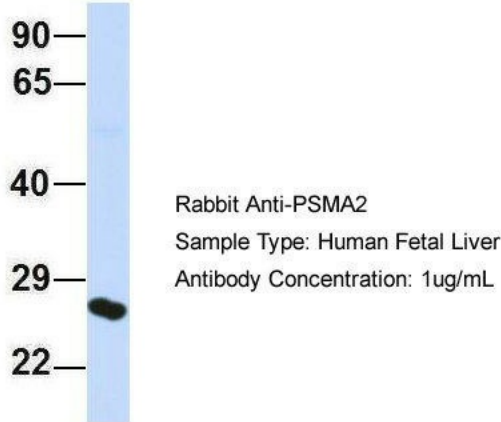
Host: Rabbit; Target Name: PSMA2; Sample Tissue: Human Adult Placenta; Antibody Dilution: 1.0 ug/ml

### PSMA2



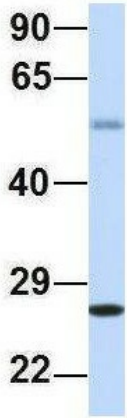
Host: Rabbit; Target Name: PSMA2; Sample Tissue: Human Fetal Lung; Antibody Dilution: 1.0 ug/ml

### PSMA2



Host: Rabbit; Target Name: PSMA2; Sample Tissue: Human Fetal Liver; Antibody Dilution: 1.0 ug/ml

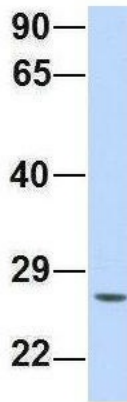
## PSMA2



Rabbit Anti-PSMA2  
Sample Type: Human Fetal Heart  
Antibody Concentration: 1ug/mL

Host: Rabbit; Target Name: PSMA2; Sample  
Tissue: Human Fetal Heart; Antibody Dilution: 1.0  
ug/ml

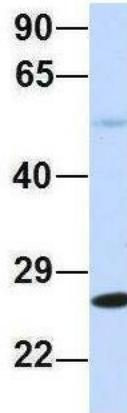
## PSMA2



Rabbit Anti-PSMA2  
Sample Type: Human Fetal Brain  
Antibody Concentration: 1ug/mL

Host: Rabbit; Target Name: PSMA2; Sample  
Tissue: Human Fetal Brain; Antibody Dilution: 1.0  
ug/ml

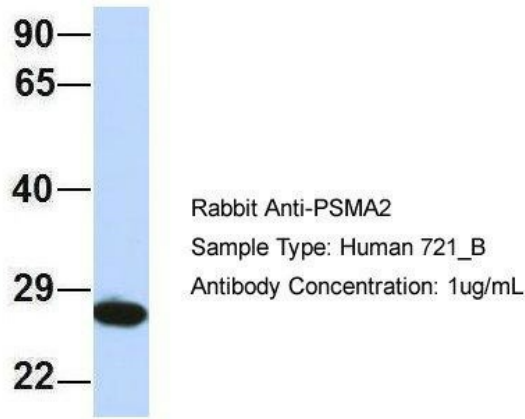
## PSMA2



Rabbit Anti-PSMA2  
Sample Type: Human Fetal Muscle  
Antibody Concentration: 1ug/mL

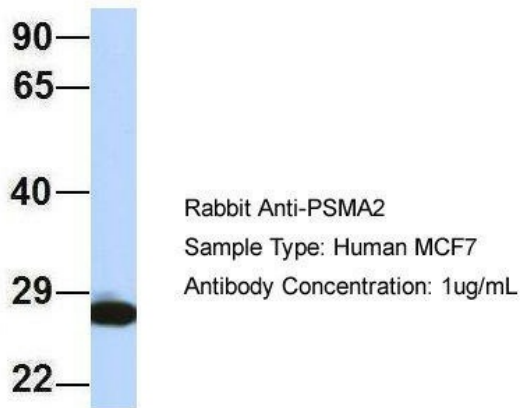
Host: Rabbit; Target Name: PSMA2; Sample  
Tissue: Human Fetal Muscle; Antibody Dilution:  
1.0 ug/ml

## PSMA2



Host: Rabbit; Target Name: PSMA2; Sample Tissue: 721\_B; Antibody Dilution: 1.0 ug/ml; PSMA2 is strongly supported by BioGPS gene expression data to be expressed in Human 721\_B cells

## PSMA2



Host: Rabbit; Target Name: PSMA2; Sample Tissue: MCF7; Antibody Dilution: 1.0 ug/ml; There is BioGPS gene expression data showing that PSMA2 is expressed in MCF7