

Product datasheet for **TA342159**

Kallikrein 10 (KLK10) Rabbit Polyclonal Antibody

Product data:

Product Type:	Primary Antibodies
Applications:	WB
Recommended Dilution:	WB
Reactivity:	Human
Host:	Rabbit
Isotype:	IgG
Clonality:	Polyclonal
Immunogen:	The immunogen for anti-KLK10 antibody: synthetic peptide directed towards the N terminal of human KLK10. Synthetic peptide located within the following region: LLPQNDRDLPEAYGSPCARGSQPWQVSLFNGLSFHCAGVLVDQSWLTA
Formulation:	Liquid. Purified antibody supplied in 1x PBS buffer with 0.09% (w/v) sodium azide and 2% sucrose. <i>Note that this product is shipped as lyophilized powder to China customers.</i>
Concentration:	lot specific
Purification:	Affinity Purified
Conjugation:	Unconjugated
Storage:	Store at -20°C as received.
Stability:	Stable for 12 months from date of receipt.
Predicted Protein Size:	30 kDa
Gene Name:	kallikrein related peptidase 10
Database Link:	NP_002767 Entrez Gene 5655 Human O43240



[View online »](#)

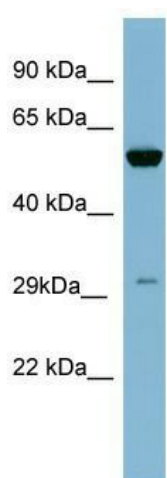
Background: Kallikreins are a subgroup of serine proteases having diverse physiological functions. Growing evidence suggests that many kallikreins are implicated in carcinogenesis and some have potential as novel cancer and other disease biomarkers. This gene is one of the fifteen kallikrein subfamily members located in a cluster on chromosome 19. Its encoded protein is secreted and may play a role in suppression of tumorigenesis in breast and prostate cancers. Alternate splicing of this gene results in multiple transcript variants encoding the same protein. [provided by RefSeq, Jul 2008]

Synonyms: NES1; PRSSL1

Note: Immunogen Sequence Homology: Human: 100%

Protein Families: Druggable Genome, Protease, Secreted Protein

Product images:



WB Suggested Anti-KLK10 Antibody Titration: 0.2-1 ug/ml; ELISA Titer: 1:62500; Positive Control: THP-1 cell lysate