

Product datasheet for **TA342158**

PRSS8 Rabbit Polyclonal Antibody

Product data:

Product Type:	Primary Antibodies
Applications:	WB
Recommended Dilution:	WB
Reactivity:	Human
Host:	Rabbit
Isotype:	IgG
Clonality:	Polyclonal
Immunogen:	The immunogen for anti-PRSS8 antibody: synthetic peptide directed towards the middle region of human PRSS8. Synthetic peptide located within the following region: PITFSRYIRPICLPAANASFPNGLHCTVTGWGHVAPSVLLTPKPLQQLE
Formulation:	Liquid. Purified antibody supplied in 1x PBS buffer with 0.09% (w/v) sodium azide and 2% sucrose. <i>Note that this product is shipped as lyophilized powder to China customers.</i>
Concentration:	lot specific
Purification:	Affinity Purified
Conjugation:	Unconjugated
Storage:	Store at -20°C as received.
Stability:	Stable for 12 months from date of receipt.
Predicted Protein Size:	33 kDa
Gene Name:	protease, serine 8
Database Link:	NP_002764 Entrez Gene 5652 Human Q16651
Background:	This gene encodes a trypsinogen, which is a member ofThe trypsin family of serine proteases.This enzyme is highly expressed in prostate epithelia and is one of several proteolytic enzymes found in seminal fluid.The proprotein is cleaved to produce a light chain and a heavy chain which are associated by a disulfide bond. It is active on peptide linkages involvingThe carboxyl group of lysine or arginine. [provided by RefSeq, Jul 2008]



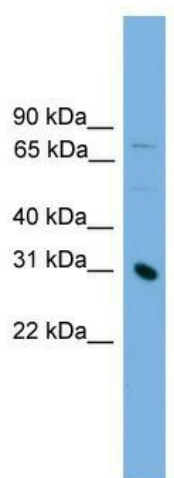
[View online »](#)

Synonyms: CAP1; PROSTASIN

Note: Immunogen Sequence Homology: Pig: 100%; Rat: 100%; Human: 100%; Mouse: 100%; Rabbit: 100%; Guinea pig: 100%; Dog: 92%; Horse: 92%; Bovine: 92%

Protein Families: Druggable Genome, Protease, Secreted Protein

Product images:



WB Suggested Anti-PRSS8 Antibody Titration: 0.2-1 ug/ml; ELISA Titer: 1:1562500; Positive Control: Jurkat cell lysate