

## Product datasheet for TA342157

### Trypsin (PRSS3) Rabbit Polyclonal Antibody

#### Product data:

Product Type:	Primary Antibodies
Applications:	WB
Recommended Dilution:	WB
Reactivity:	Human
Host:	Rabbit
Isotype:	IgG
Clonality:	Polyclonal
Immunogen:	The immunogen for anti-PRSS3 antibody: synthetic peptide directed towards the N terminal of human PRSS3. Synthetic peptide located within the following region: VAVPFDDDDKIVGGYTCEENSLPYQVSLNSGSHFCGGSLISEQWVVSAAH
Formulation:	Liquid. Purified antibody supplied in 1x PBS buffer with 0.09% (w/v) sodium azide and 2% sucrose.
Concentration:	lot specific
Purification:	Affinity Purified
Conjugation:	Unconjugated
Storage:	Store at -20°C as received.
Stability:	Stable for 12 months from date of receipt.
Predicted Protein Size:	33 kDa
Gene Name:	protease, serine 3
Database Link:	<a href="#">NP_031369</a> <a href="#">Entrez Gene 5646 Human P35030</a>
Background:	This gene encodes a trypsinogen, which is a member ofThe trypsin family of serine proteases.This enzyme is expressed inThe brain and pancreas and is resistant to common trypsin inhibitors. It is active on peptide linkages involvingThe carboxyl group of lysine or arginine.This gene is localized toThe locus of T cell receptor beta variable orphans on chromosome 9. Four transcript variants encoding different isoforms have been described forThis gene. [provided by RefSeq, Oct 2010]



[View online »](#)

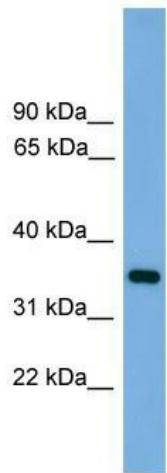
**Synonyms:** MTG; PRSS4; T9; TRY3; TRY4

**Note:** Immunogen Sequence Homology: Pig: 100%; Rat: 100%; Human: 100%; Guinea pig: 100%; Dog: 92%; Horse: 92%; Mouse: 92%; Rabbit: 92%; Bovine: 91%

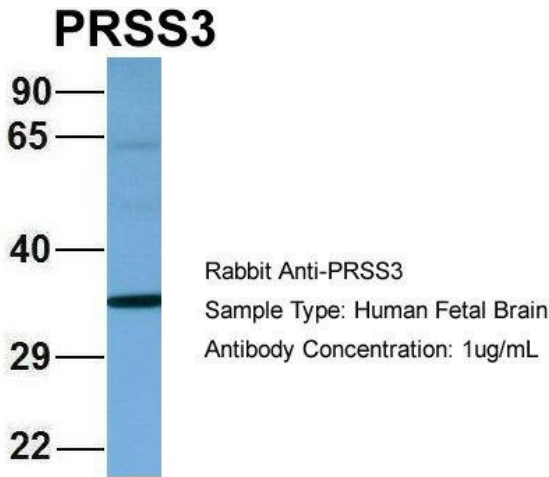
**Protein Families:** Druggable Genome, Protease, Secreted Protein

**Protein Pathways:** Neuroactive ligand-receptor interaction

**Product images:**



WB Suggested Anti-PRSS3 Antibody Titration: 0.2-1 ug/ml; Positive Control: Human Muscle



Host: Rabbit; Target Name: PRSS3; Sample Tissue: Human Fetal Brain; Antibody Dilution: 1.0 ug/ml