

Product datasheet for **TA342156**

PRPSAP2 Rabbit Polyclonal Antibody

Product data:

Product Type:	Primary Antibodies
Applications:	WB
Recommended Dilution:	WB
Reactivity:	Human
Host:	Rabbit
Isotype:	IgG
Clonality:	Polyclonal
Immunogen:	The immunogen for anti-PRPSAP2 antibody: synthetic peptide directed towards the middle region of human PRPSAP2. Synthetic peptide located within the following region: DYRNAVIVAKSPASAKRAQSFARLRLGIAVIHGAEQDAESDLVDGRHSP
Formulation:	Liquid. Purified antibody supplied in 1x PBS buffer with 0.09% (w/v) sodium azide and 2% sucrose. <i>Note that this product is shipped as lyophilized powder to China customers.</i>
Concentration:	lot specific
Purification:	Affinity Purified
Conjugation:	Unconjugated
Storage:	Store at -20°C as received.
Stability:	Stable for 12 months from date of receipt.
Predicted Protein Size:	41 kDa
Gene Name:	phosphoribosyl pyrophosphate synthetase associated protein 2
Database Link:	NP_002758 Entrez Gene 5636 Human O60256



[View online »](#)

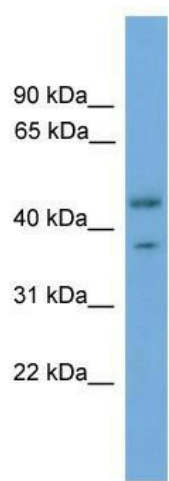
Background: This gene encodes a protein that associates withThe enzyme phosphoribosylpyrophosphate synthetase (PRS). PRS catalyzesThe formation of phosphoribosylpyrophosphate which is a substrate for synthesis of purine and pyrimidine nucleotides, histidine, tryptophan and NAD. PRS exists as a complex with two catalytic subunits and two associated subunits.This gene encodes a non-catalytic associated subunit of PRS. Alternate splicing results in multiple transcript variants. [provided by RefSeq, Sep 2011]

Synonyms: PAP41

Note: Immunogen Sequence Homology: Dog: 100%; Pig: 100%; Rat: 100%; Horse: 100%; Human: 100%; Mouse: 100%; Bovine: 100%; Rabbit: 100%; Zebrafish: 100%; Guinea pig: 100%

Protein Families: Druggable Genome

Product images:



WB Suggested Anti-PRPSAP2 Antibody Titration:
0.2-1 ug/ml; ELISA Titer: 1:12500; Positive Control:
Human heart