

Product datasheet for **TA342155**

PRPSAP2 Rabbit Polyclonal Antibody

Product data:

Product Type:	Primary Antibodies
Applications:	WB
Recommended Dilution:	WB
Reactivity:	Human
Host:	Rabbit
Isotype:	IgG
Clonality:	Polyclonal
Immunogen:	The immunogen for Anti-PRPSAP2 antibody is: synthetic peptide directed towards the N-terminal region of Human PRPSAP2. Synthetic peptide located within the following region: MFCVTPPELETKMNITKGGLVLFANSNSSCMELSKKIAERLGVEMGKVQ
Formulation:	Liquid. Purified antibody supplied in 1x PBS buffer with 0.09% (w/v) sodium azide and 2% sucrose. <i>Note that this product is shipped as lyophilized powder to China customers.</i>
Concentration:	lot specific
Purification:	Affinity Purified
Conjugation:	Unconjugated
Storage:	Store at -20°C as received.
Stability:	Stable for 12 months from date of receipt.
Predicted Protein Size:	41 kDa
Gene Name:	phosphoribosyl pyrophosphate synthetase associated protein 2
Database Link:	NP_002758 Entrez Gene 5636 Human O60256



[View online »](#)

Background:

This gene encodes a protein that associates with The enzyme phosphoribosylpyrophosphate synthetase (PRS). PRS catalyzes The formation of phosphoribosylpyrophosphate which is a substrate for synthesis of purine and pyrimidine nucleotides, histidine, tryptophan and NAD. PRS exists as a complex with two catalytic subunits and two associated subunits. This gene encodes a non-catalytic associated subunit of PRS. Alternate splicing results in multiple transcript variants. [provided by RefSeq, Sep 2011]

Synonyms:

PAP41

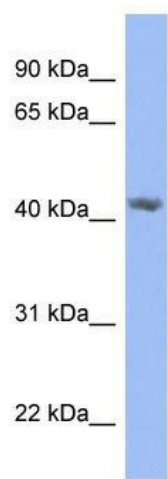
Note:

Immunogen Sequence Homology: Dog: 100%; Pig: 100%; Rat: 100%; Horse: 100%; Human: 100%; Mouse: 100%; Bovine: 100%; Guinea pig: 100%; Rabbit: 93%; Zebrafish: 79%

Protein Families:

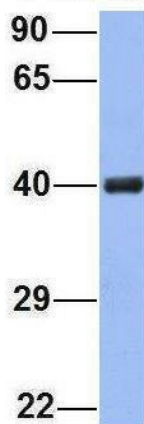
Druggable Genome

Product images:



WB Suggested Anti-PRPSAP2 Antibody Titration: 0.2-1 ug/ml; ELISA Titer: 1:100; Positive Control: HepG2 cell lysate

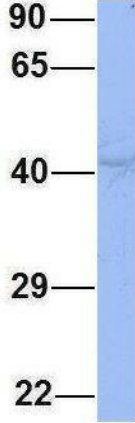
PRPSAP2



Rabbit Anti-PRPSAP2
Sample Type: Human Fetal Brain
Antibody Concentration: 1ug/mL

Host: Rabbit; Target Name: PRPSAP2; Sample Tissue: Human Fetal Brain; Antibody Dilution: 1.0 ug/ml

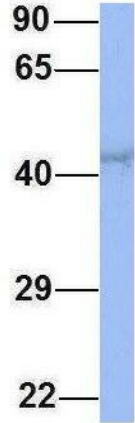
PRPSAP2



Rabbit Anti-PRPSAP2
 Sample Type: Human Jurkat
 Antibody Concentration: 1ug/mL

Host: Rabbit; Target Name: PRPSAP2; Sample Tissue: Jurkat; Antibody Dilution: 1.0 ug/ml; PRPSAP2 is supported by BioGPS gene expression data to be expressed in Jurkat

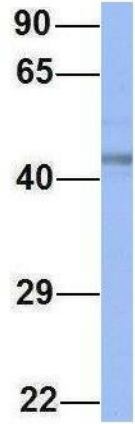
PRPSAP2



Rabbit Anti-PRPSAP2
 Sample Type: Human MCF7
 Antibody Concentration: 1ug/mL

Host: Rabbit; Target Name: PRPSAP2; Sample Tissue: MCF7; Antibody Dilution: 1.0 ug/ml; PRPSAP2 is supported by BioGPS gene expression data to be expressed in MCF7

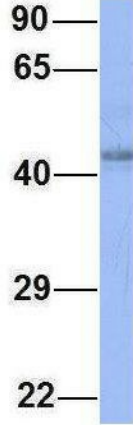
PRPSAP2



Rabbit Anti-PRPSAP2
 Sample Type: Human 721_B
 Antibody Concentration: 1ug/mL

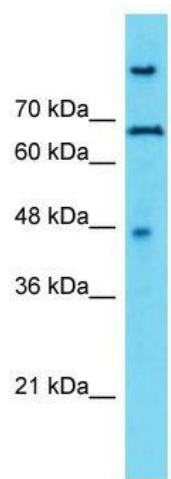
Host: Rabbit; Target Name: PRPSAP2; Sample Tissue: 721_B; Antibody Dilution: 1.0 ug/ml; PRPSAP2 is supported by BioGPS gene expression data to be expressed in 721_B

PRPSAP2



Rabbit Anti-PRPSAP2
Sample Type: Human HeLa
Antibody Concentration: 1ug/mL

Host: Rabbit; Target Name: PRPSAP2; Sample Tissue: HeLa; Antibody Dilution: 1.0 ug/ml; PRPSAP2 is supported by BioGPS gene expression data to be expressed in HeLa



Host: Rabbit; Target Name: PRPSAP2; Sample Tissue: HeLa Whole Cell lysates; Antibody Dilution: 2.0 ug/ml; PRPSAP2 is supported by BioGPS gene expression data to be expressed in HeLa