

## Product datasheet for **TA342154**

### Protein kinase Y linked (PRKY) Rabbit Polyclonal Antibody

#### Product data:

Product Type:	Primary Antibodies
Applications:	WB
Recommended Dilution:	WB
Reactivity:	Human
Host:	Rabbit
Isotype:	IgG
Clonality:	Polyclonal
Immunogen:	The immunogen for anti-PRKY antibody: synthetic peptide directed towards the N terminal of human PRKY. Synthetic peptide located within the following region: MEAPGPAQAAAESNSREVTEDAADWAPALCPSPEARSPEAPAYRLQDCD
Formulation:	Liquid. Purified antibody supplied in 1x PBS buffer with 0.09% (w/v) sodium azide and 2% sucrose.
Concentration:	lot specific
Purification:	Affinity Purified
Conjugation:	Unconjugated
Storage:	Store at -20°C as received.
Stability:	Stable for 12 months from date of receipt.
Predicted Protein Size:	32 kDa
Gene Name:	protein kinase, Y-linked, pseudogene
Database Link:	<a href="#">NP_002751</a> <a href="#">Entrez Gene 5616 Human</a> <a href="#">O43930</a>
Background:	This gene is similar toThe protein kinase, X-linked gene inThe pseudoautosomal region ofThe X chromosome.The gene is classified as a transcribed pseudogene because it has lost a coding exon that results in all transcripts being candidates for nonsense-mediated decay (NMD) and unlikely to express a protein. Abnormal recombination betweenThis gene and a related gene on chromosome X is a frequent cause of XX males and XY females. [provided by RefSeq, Jul 2010]



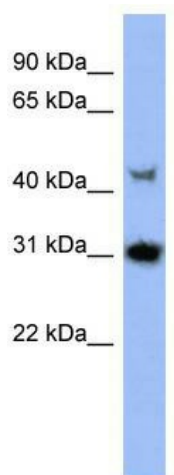
[View online »](#)

**Synonyms:** OTTHUMP00000033227; protein kinase; Y-linked

**Note:** Immunogen Sequence Homology: Human: 100%

**Protein Families:** Druggable Genome, Protein Kinase

**Product images:**



WB Suggested Anti-PRKY Antibody Titration: 0.2-1 ug/ml; ELISA Titer: 1:1562500; Positive Control: HepG2 cell lysate