

Product datasheet for **TA342153**

MAPK11 Rabbit Polyclonal Antibody

Product data:

Product Type:	Primary Antibodies
Applications:	WB
Recommended Dilution:	WB
Reactivity:	Rat
Host:	Rabbit
Isotype:	IgG
Clonality:	Polyclonal
Immunogen:	The immunogen for Anti-Mapk11 antibody is: synthetic peptide directed towards the N-terminal region of Rat Mapk11. Synthetic peptide located within the following region: VPQRLQGLRPVGSAYDARLRQKVAVKKLSRPFQSLIHARTY
Formulation:	Liquid. Purified antibody supplied in 1x PBS buffer with 0.09% (w/v) sodium azide and 2% sucrose. <i>Note that this product is shipped as lyophilized powder to China customers.</i>
Concentration:	lot specific
Purification:	Affinity Purified
Conjugation:	Unconjugated
Storage:	Store at -20°C as received.
Stability:	Stable for 12 months from date of receipt.
Predicted Protein Size:	40 kDa
Gene Name:	mitogen-activated protein kinase 11
Database Link:	NP_002742 Entrez Gene 689314 Rat Q15759
Background:	The function of This protein remains unknown.
Synonyms:	p38-2; P38B; p38Beta; P38BETA2; PRKM11; SAPK2; SAPK2B
Note:	Immunogen Sequence Homology: Rat: 100%; Human: 100%; Mouse: 100%; Bovine: 100%; Horse: 93%

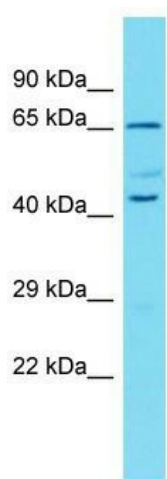


[View online »](#)

Protein Families: Druggable Genome, Protein Kinase

Protein Pathways: Amyotrophic lateral sclerosis (ALS), Epithelial cell signaling in Helicobacter pylori infection, Fc epsilon RI signaling pathway, GnRH signaling pathway, Leukocyte transendothelial migration, MAPK signaling pathway, Neurotrophin signaling pathway, NOD-like receptor signaling pathway, Progesterone-mediated oocyte maturation, RIG-I-like receptor signaling pathway, T cell receptor signaling pathway, Toll-like receptor signaling pathway, VEGF signaling pathway

Product images:



Host: Rabbit; Target Name: Mapk11; Sample Tissue: Rat Pancreas lysates; Antibody Dilution: 1.0 ug/ml