

Product datasheet for **TA342151**

MAPK4 Rabbit Polyclonal Antibody

Product data:

Product Type:	Primary Antibodies
Applications:	WB
Recommended Dilution:	WB
Reactivity:	Human
Host:	Rabbit
Isotype:	IgG
Clonality:	Polyclonal
Immunogen:	The immunogen for anti-MAPK4 antibody: synthetic peptide directed towards the middle region of human MAPK4. Synthetic peptide located within the following region: DFLEKILTFNPM DRLTAEMGLQHPYMSPYSCPEDEPTSQHPFRIEDEIDD
Formulation:	Liquid. Purified antibody supplied in 1x PBS buffer with 0.09% (w/v) sodium azide and 2% sucrose. <i>Note that this product is shipped as lyophilized powder to China customers.</i>
Concentration:	lot specific
Purification:	Affinity Purified
Conjugation:	Unconjugated
Storage:	Store at -20°C as received.
Stability:	Stable for 12 months from date of receipt.
Predicted Protein Size:	66 kDa
Gene Name:	mitogen-activated protein kinase 4
Database Link:	NP_002738 Entrez Gene 5596 Human P31152
Background:	Mitogen-activated protein kinase 4 is a member ofThe mitogen-activated protein kinase family. Tyrosine kinase growth factor receptors activate mitogen-activated protein kinases whichThen translocate intoThe nucleus and phosphorylate nuclear targets. Alternative splicing results in multiple transcript variants. [provided by RefSeq, May 2014]
Synonyms:	ERK-4; ERK4; p63-MAPK; p63MAPK; PRKM4

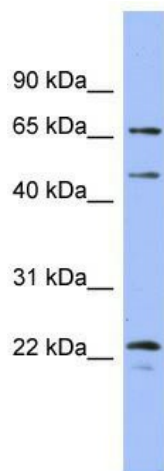


[View online »](#)

Note: Immunogen Sequence Homology: Dog: 100%; Pig: 100%; Rat: 100%; Horse: 100%; Human: 100%; Mouse: 100%; Bovine: 100%; Guinea pig: 100%; Rabbit: 93%; Zebrafish: 79%

Protein Families: Druggable Genome, Protein Kinase

Product images:



WB Suggested Anti-MAPK4 Antibody Titration:
0.2-1 ug/ml; ELISA Titer: 1:1562500; Positive
Control: Human heart