

Product datasheet for **TA342144**

Neurotrophin 3 (NTF3) Rabbit Polyclonal Antibody

Product data:

Product Type:	Primary Antibodies
Applications:	WB
Recommended Dilution:	WB
Reactivity:	Rat
Host:	Rabbit
Isotype:	IgG
Clonality:	Polyclonal
Immunogen:	The immunogen for Anti-Ntf3 antibody is: synthetic peptide directed towards the N-terminal region of Ntf3. Synthetic peptide located within the following region: LAYLRGIQGNNMDQRSLPEDSLNSLIKLIQADILKNKLSQMVDVKENY
Formulation:	Liquid. Purified antibody supplied in 1x PBS buffer with 0.09% (w/v) sodium azide and 2% sucrose. <i>Note that this product is shipped as lyophilized powder to China customers.</i>
Concentration:	lot specific
Purification:	Affinity Purified
Conjugation:	Unconjugated
Storage:	Store at -20°C as received.
Stability:	Stable for 12 months from date of receipt.
Predicted Protein Size:	28 kDa
Gene Name:	neurotrophin 3
Database Link:	NP_001096124 Entrez Gene 81737 Rat P20783



[View online »](#)

Background: a neuronal survival protein [RGD, Feb 2006]. Transcript Variant:This variant (1) isThe longest transcript and encodesThe longer isoform (1). Publication Note:This RefSeq record includes a subset ofThe publications that are available forThis gene. Please seeThe Gene record to access additional publications. ##Evidence-Data-START## Transcript exon combination :: BC070504.1, CK365049.1 [ECO:0000332] RNAseq introns :: single sample supports all introns SRS369736, SRS369739 [ECO:0000348] ##Evidence-Data-END##

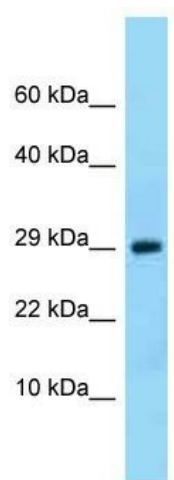
Synonyms: HDNF; NGF-2; NGF2; NT-3; NT3

Note: Immunogen Sequence Homology: Pig: 100%; Rat: 100%; Horse: 100%; Human: 100%; Mouse: 100%; Bovine: 100%; Rabbit: 100%; Guinea pig: 100%; Dog: 93%

Protein Families: Druggable Genome, Secreted Protein

Protein Pathways: MAPK signaling pathway, Neurotrophin signaling pathway

Product images:



WB Suggested Anti-Ntf3 Antibody; Titration: 1.0 ug/ml; Positive Control: Rat Brain