

Product datasheet for **TA342143**

HIPK1 Rabbit Polyclonal Antibody

Product data:

Product Type:	Primary Antibodies
Applications:	WB
Recommended Dilution:	WB
Reactivity:	Human
Host:	Rabbit
Isotype:	IgG
Clonality:	Polyclonal
Immunogen:	The immunogen for anti-HIPK1 antibody: synthetic peptide directed towards the middle region of human HIPK1. Synthetic peptide located within the following region: PLNLSQNQQSSAAPTSSQERSSNPAPRRQQAFVAPLSQAPYTFQHGSPLHS
Formulation:	Liquid. Purified antibody supplied in 1x PBS buffer with 0.09% (w/v) sodium azide and 2% sucrose. <i>Note that this product is shipped as lyophilized powder to China customers.</i>
Concentration:	lot specific
Purification:	Affinity Purified
Conjugation:	Unconjugated
Storage:	Store at -20°C as received.
Stability:	Stable for 12 months from date of receipt.
Predicted Protein Size:	131 kDa
Gene Name:	homeodomain interacting protein kinase 1
Database Link:	NP_938010 Entrez Gene 204851 Human Q86Z02
Background:	The protein encoded by this gene belongs to the Ser/Thr family of protein kinases and HIPK subfamily. It phosphorylates homeodomain transcription factors and may also function as a co-repressor for homeodomain transcription factors. Alternative splicing results in four transcript variants encoding four distinct isoforms. [provided by RefSeq, Jul 2008]
Synonyms:	Myak; Nbak2

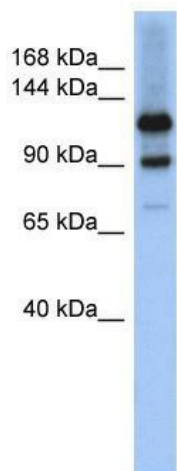


[View online »](#)

Note: Immunogen Sequence Homology: Human: 100%; Pig: 93%; Horse: 93%; Bovine: 93%; Rabbit: 93%; Guinea pig: 93%; Dog: 86%; Rat: 86%; Mouse: 86%

Protein Families: Druggable Genome, Protein Kinase, Transcription Factors

Product images:



WB Suggested Anti-HIPK1 Antibody Titration: 0.2-1 ug/ml; ELISA Titer: 1:1562500; Positive Control: 721_B cell lysate