

Product datasheet for **TA342141**

SCFD1 Rabbit Polyclonal Antibody

Product data:

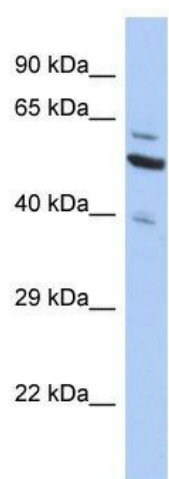
Product Type:	Primary Antibodies
Applications:	WB
Recommended Dilution:	WB
Reactivity:	Human
Host:	Rabbit
Isotype:	IgG
Clonality:	Polyclonal
Immunogen:	The immunogen for Anti-SCFD1 antibody is: synthetic peptide directed towards the C-terminal region of Human SCFD1. Synthetic peptide located within the following region: YFDPKMLRGNDSVPRNKNPFEAIVFVGGGNYIEYQNLVDYIKGKQGK
Formulation:	Liquid. Purified antibody supplied in 1x PBS buffer with 0.09% (w/v) sodium azide and 2% sucrose. <i>Note that this product is shipped as lyophilized powder to China customers.</i>
Concentration:	lot specific
Purification:	Affinity Purified
Conjugation:	Unconjugated
Storage:	Store at -20°C as received.
Stability:	Stable for 12 months from date of receipt.
Predicted Protein Size:	63 kDa
Gene Name:	sec1 family domain containing 1
Database Link:	NP_057190 Entrez Gene 23256 Human Q8WVM8
Background:	Plays a role in SNARE-pin assembly and Golgi-to-ER retrograde transport via its interaction with COG4. Involved in vesicular transport betweenThe endoplasmic reticulum andThe Golgi.
Synonyms:	C14orf163; RA410; SLY1; SLY1P; STXBP1L2



[View online »](#)

Note: Immunogen Sequence Homology: Dog: 100%; Rat: 100%; Horse: 100%; Human: 100%; Bovine: 100%; Rabbit: 100%; Pig: 93%; Mouse: 93%; Guinea pig: 93%; Zebrafish: 86%

Product images:



Host: Rabbit; Target Name: SCFD1; Sample Tissue: HepG2 Whole cell lysates; Antibody Dilution: 1.0 ug/ml