

## Product datasheet for **TA342140**

### SCFD1 Rabbit Polyclonal Antibody

#### Product data:

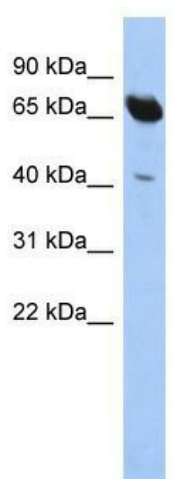
Product Type:	Primary Antibodies
Applications:	WB
Recommended Dilution:	WB
Reactivity:	Human
Host:	Rabbit
Isotype:	IgG
Clonality:	Polyclonal
Immunogen:	The immunogen for anti-SCFD1 antibody: synthetic peptide directed towards the N terminal of human SCFD1. Synthetic peptide located within the following region: SAVTQVAKVFDQYLNFTLEDDMFVLCNQNKELVSYRAINRPDITDTEME
Formulation:	Liquid. Purified antibody supplied in 1x PBS buffer with 0.09% (w/v) sodium azide and 2% sucrose. <i>Note that this product is shipped as lyophilized powder to China customers.</i>
Concentration:	lot specific
Purification:	Affinity Purified
Conjugation:	Unconjugated
Storage:	Store at -20°C as received.
Stability:	Stable for 12 months from date of receipt.
Predicted Protein Size:	65 kDa
Gene Name:	sec1 family domain containing 1
Database Link:	<a href="#">NP_057190</a> <a href="#">Entrez Gene 23256 Human</a> <a href="#">Q8WVM8</a>
Background:	Plays a role in SNARE-pin assembly and Golgi-to-ER retrograde transport via its interaction with COG4. Involved in vesicular transport betweenThe endoplasmic reticulum andThe Golgi.
Synonyms:	C14orf163; RA410; SLY1; SLY1P; STXBP1L2



[View online »](#)

**Note:** Immunogen Sequence Homology: Dog: 100%; Pig: 100%; Rat: 100%; Horse: 100%; Human: 100%; Mouse: 100%; Bovine: 100%; Rabbit: 100%; Guinea pig: 100%

**Product images:**



WB Suggested Anti-SCFD1 Antibody Titration: 0.2-1 ug/ml; ELISA Titer: 1:1562500; Positive Control: HepG2 cell lysate