

## Product datasheet for **TA342139**

### **MAT2B Rabbit Polyclonal Antibody**

#### **Product data:**

<b>Product Type:</b>	Primary Antibodies
<b>Applications:</b>	WB
<b>Recommended Dilution:</b>	WB
<b>Reactivity:</b>	Human
<b>Host:</b>	Rabbit
<b>Isotype:</b>	IgG
<b>Clonality:</b>	Polyclonal
<b>Immunogen:</b>	The immunogen for anti-MAT2B antibody: synthetic peptide directed towards the middle region of human MAT2B. Synthetic peptide located within the following region: GNLAKEAAAVGAFLIYISSDYVFDGTNPPYREEDIPAPLNLYGKTKLDGE
<b>Formulation:</b>	Liquid. Purified antibody supplied in 1x PBS buffer with 0.09% (w/v) sodium azide and 2% sucrose. <i>Note that this product is shipped as lyophilized powder to China customers.</i>
<b>Concentration:</b>	lot specific
<b>Purification:</b>	Affinity Purified
<b>Conjugation:</b>	Unconjugated
<b>Storage:</b>	Store at -20°C as received.
<b>Stability:</b>	Stable for 12 months from date of receipt.
<b>Predicted Protein Size:</b>	36 kDa
<b>Gene Name:</b>	methionine adenosyltransferase 2B
<b>Database Link:</b>	<a href="#">NP_037415</a> <a href="#">Entrez Gene 27430 Human</a> <a href="#">Q9NZL9</a>
<b>Background:</b>	The protein encoded byThis gene belongs toThe methionine adenosyltransferase (MAT) family. MAT catalyzesThe biosynthesis of S-adenosylmethionine from methionine and ATP.This protein isThe regulatory beta subunit of MAT. Alternative splicing results in multiple transcript variants encoding different isoforms. [provided by RefSeq, Nov 2012]
<b>Synonyms:</b>	MAT-II; MATIIbeta; Nbla02999; SDR23E1; TGR

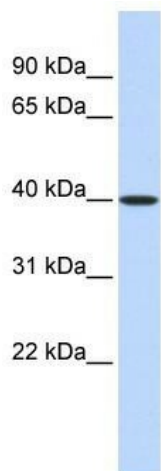


[View online »](#)

**Note:** Immunogen Sequence Homology: Dog: 100%; Pig: 100%; Rat: 100%; Horse: 100%; Human: 100%; Bovine: 100%; Rabbit: 100%; Guinea pig: 100%; Mouse: 93%; Zebrafish: 91%

**Protein Pathways:** Cysteine and methionine metabolism, Metabolic pathways, Selenoamino acid metabolism

**Product images:**



WB Suggested Anti-MAT2B Antibody Titration:  
0.2-1 ug/ml; ELISA Titer: 1:312500; Positive  
Control: Human Lung