

Product datasheet for **TA342138**

MAT2B Rabbit Polyclonal Antibody

Product data:

Product Type:	Primary Antibodies
Applications:	WB
Recommended Dilution:	WB
Reactivity:	Human
Host:	Rabbit
Isotype:	IgG
Clonality:	Polyclonal
Immunogen:	The immunogen for anti-MAT2B antibody: synthetic peptide directed towards the N terminal of human MAT2B. Synthetic peptide located within the following region: KEFQQNNWHAVGCGFRRARPKFEQVNLDSNAVHHIIHDFQPHVIVHCAA
Formulation:	Liquid. Purified antibody supplied in 1x PBS buffer with 0.09% (w/v) sodium azide and 2% sucrose. <i>Note that this product is shipped as lyophilized powder to China customers.</i>
Concentration:	lot specific
Purification:	Affinity Purified
Conjugation:	Unconjugated
Storage:	Store at -20°C as received.
Stability:	Stable for 12 months from date of receipt.
Predicted Protein Size:	36 kDa
Gene Name:	methionine adenosyltransferase 2B
Database Link:	NP_037415 Entrez Gene 27430 Human Q9NZL9
Background:	The protein encoded byThis gene belongs toThe methionine adenosyltransferase (MAT) family. MAT catalyzesThe biosynthesis of S-adenosylmethionine from methionine and ATP.This protein isThe regulatory beta subunit of MAT. Alternative splicing results in multiple transcript variants encoding different isoforms. [provided by RefSeq, Nov 2012]
Synonyms:	MAT-II; MATIIbeta; Nbla02999; SDR23E1; TGR

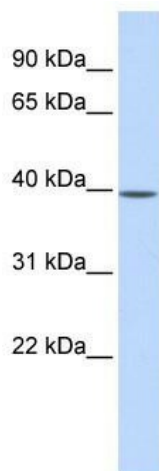


[View online »](#)

Note: Immunogen Sequence Homology: Dog: 100%; Pig: 100%; Rat: 100%; Horse: 100%; Human: 100%; Mouse: 100%; Bovine: 100%; Rabbit: 100%; Guinea pig: 100%

Protein Pathways: Cysteine and methionine metabolism, Metabolic pathways, Selenoamino acid metabolism

Product images:



WB Suggested Anti-MAT2B Antibody Titration:
0.2-1 ug/ml; ELISA Titer: 1:312500; Positive
Control: Human Liver