

Product datasheet for TA342132

HES5 Rabbit Polyclonal Antibody

Product data:

Product Type:	Primary Antibodies
Applications:	WB
Recommended Dilution:	WB
Reactivity:	Human
Host:	Rabbit
Isotype:	IgG
Clonality:	Polyclonal
Immunogen:	The immunogen for anti-HES5 antibody: synthetic peptide directed towards the middle region of human HES5. Synthetic peptide located within the following region: AASDTQMKLLYHFQRPPAAPAAPEKPKAPGAAPPPALSAKATAAAAAAH
Formulation:	Liquid. Purified antibody supplied in 1x PBS buffer with 0.09% (w/v) sodium azide and 2% sucrose. <i>Note that this product is shipped as lyophilized powder to China customers.</i>
Concentration:	lot specific
Conjugation:	Unconjugated
Storage:	Store at -20°C as received.
Stability:	Stable for 12 months from date of receipt.
Predicted Protein Size:	18 kDa
Gene Name:	hes family bHLH transcription factor 5
Database Link:	NP_001010926 Entrez Gene 388585 Human Q5TA89
Background:	This gene encodes a member of a family of basic helix-loop-helix transcriptional repressors. The protein product of this gene, which is activated downstream of the Notch pathway, regulates cell differentiation in multiple tissues. Disruptions in the normal expression of this gene have been associated with developmental diseases and cancer.
Synonyms:	bHLHb38



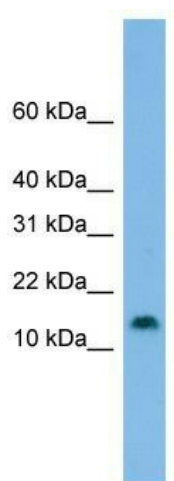
[View online »](#)

Note: Immunogen Sequence Homology: Dog: 100%; Human: 100%; Rat: 93%; Bovine: 93%; Mouse: 88%; Pig: 85%; Guinea pig: 85%

Protein Families: Druggable Genome, ES Cell Differentiation/IPS

Protein Pathways: Notch signaling pathway

Product images:



WB Suggested Anti-HES5 Antibody Titration: 0.2-1 ug/ml; ELISA Titer: 1: 1562500; Positive Control: ACHN cell lysate