

## Product datasheet for **TA342130**

### ZIK1 Rabbit Polyclonal Antibody

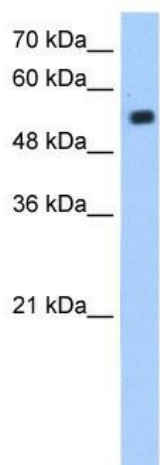
#### Product data:

Product Type:	Primary Antibodies
Applications:	WB
Recommended Dilution:	WB
Reactivity:	Human
Host:	Rabbit
Isotype:	IgG
Clonality:	Polyclonal
Immunogen:	The immunogen for anti-ZIK1 antibody: synthetic peptide directed towards the N terminal of human ZIK1. Synthetic peptide located within the following region: LYLEVMLENFALVASLGCGHGTEDEETPSDQNVSVGVSQSKAGSSTQKTQ
Formulation:	Liquid. Purified antibody supplied in 1x PBS buffer with 0.09% (w/v) sodium azide and 2% sucrose. <i>Note that this product is shipped as lyophilized powder to China customers.</i>
Concentration:	lot specific
Conjugation:	Unconjugated
Storage:	Store at -20°C as received.
Stability:	Stable for 12 months from date of receipt.
Predicted Protein Size:	55 kDa
Gene Name:	zinc finger protein interacting with K protein 1
Database Link:	<a href="#">NP_001010879</a> <a href="#">Entrez Gene 284307 Human</a> <a href="#">Q3SY52</a>
Background:	ZIK1 may be a transcriptional repressor.
Synonyms:	ZNF762
Note:	Immunogen Sequence Homology: Human: 100%; Pig: 83%; Bovine: 83%; Rat: 77%; Horse: 75%



[View online »](#)

## Product images:



WB Suggested Anti-ZIK1 Antibody Titration: 1.25 ug/ml; Positive Control: Jurkat cell lysate