

## Product datasheet for **TA342129**

### ZNF658B Rabbit Polyclonal Antibody

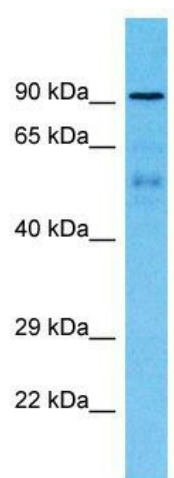
#### Product data:

Product Type:	Primary Antibodies
Applications:	WB
Recommended Dilution:	WB
Reactivity:	Human
Host:	Rabbit
Isotype:	IgG
Clonality:	Polyclonal
Immunogen:	The immunogen for Anti-ZNF658B antibody is: synthetic peptide directed towards the middle region of Human ZNF658B. Synthetic peptide located within the following region: IECGKTFSKTSHLRAHQRIHTGEKPYECEKTFSHKTHLSVHQRVHTG
Formulation:	Liquid. Purified antibody supplied in 1x PBS buffer with 0.09% (w/v) sodium azide and 2% sucrose. <i>Note that this product is shipped as lyophilized powder to China customers.</i>
Concentration:	lot specific
Purification:	Affinity Purified
Conjugation:	Unconjugated
Storage:	Store at -20°C as received.
Stability:	Stable for 12 months from date of receipt.
Predicted Protein Size:	90 kDa
Gene Name:	zinc finger protein 658B (pseudogene)
Database Link:	<a href="#">NP_001027468</a> <a href="#">Entrez Gene 401509 Human</a>
Background:	ZNF658B may be involved in transcriptional regulation.
Synonyms:	zinc finger protein 658B
Note:	Immunogen Sequence Homology: Pig: 100%; Horse: 100%; Human: 100%; Rat: 92%; Mouse: 92%; Bovine: 92%; Zebrafish: 92%; Guinea pig: 92%; Dog: 86%; Yeast: 86%; Rabbit: 86%



[View online »](#)

## Product images:



Host: Rabbit; Target Name: ZNF658B; Sample  
Tissue: Breast Tumor lysates; Antibody Dilution:  
1.0 ug/ml