

Product datasheet for **TA342128**

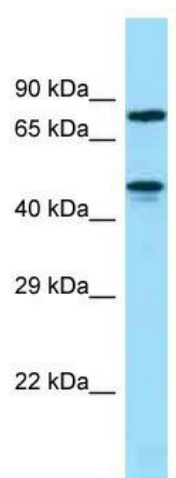
ZNF311 Rabbit Polyclonal Antibody

Product data:

Product Type:	Primary Antibodies
Applications:	WB
Recommended Dilution:	WB
Reactivity:	Human
Host:	Rabbit
Isotype:	IgG
Clonality:	Polyclonal
Immunogen:	The immunogen for Anti-ZNF311 antibody is: synthetic peptide directed towards the N-terminal region of ZNF311. Synthetic peptide located within the following region: QDVKLENQWETSIREKLRREEKEGSEEVTKCKGKNQKVLKLNLPNSKHSQ
Formulation:	Liquid. Purified antibody supplied in 1x PBS buffer with 0.09% (w/v) sodium azide and 2% sucrose. <i>Note that this product is shipped as lyophilized powder to China customers.</i>
Concentration:	lot specific
Conjugation:	Unconjugated
Storage:	Store at -20°C as received.
Stability:	Stable for 12 months from date of receipt.
Predicted Protein Size:	76 kDa
Gene Name:	zinc finger protein 311
Database Link:	NP_001010877 Entrez Gene 282890 Human Q5JNZ3
Background:	The function of This protein remains unknown.
Synonyms:	zf31
Note:	Immunogen Sequence Homology: Human: 100%; Horse: 77%



[View online »](#)

Product images:

WB Suggested Anti-ZNF311 Antibody; Titration:
1.0 ug/ml; Positive Control: THP-1 Whole Cell