

Product datasheet for **TA342125**

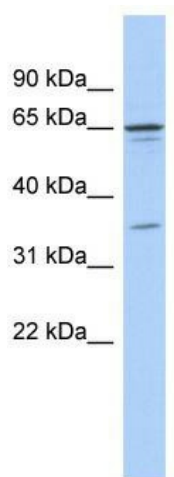
ZNF648 Rabbit Polyclonal Antibody

Product data:

Product Type:	Primary Antibodies
Applications:	WB
Recommended Dilution:	WB
Reactivity:	Human
Host:	Rabbit
Isotype:	IgG
Clonality:	Polyclonal
Immunogen:	The immunogen for anti-ZNF648 antibody: synthetic peptide directed towards the N terminal of human ZNF648. Synthetic peptide located within the following region: MAQVDSQDRWGEASPLSSLTEEAHDTQMLSMNLESDDDEDGGAEKEGTAD
Formulation:	Liquid. Purified antibody supplied in 1x PBS buffer with 0.09% (w/v) sodium azide and 2% sucrose.
Concentration:	lot specific
Conjugation:	Unconjugated
Storage:	Store at -20°C as received.
Stability:	Stable for 12 months from date of receipt.
Predicted Protein Size:	62 kDa
Gene Name:	zinc finger protein 648
Database Link:	NP_001009992 Entrez Gene 127665 Human Q5T619
Background:	ZNF648 may be involved in transcriptional regulation.
Synonyms:	OTTHUMP00000035419; zinc finger protein 648
Note:	Immunogen Sequence Homology: Human: 100%; Rat: 85%; Mouse: 79%; Pig: 77%



[View online »](#)

Product images:


WB Suggested Anti-ZNF648 Antibody Titration:
0.2-1 ug/ml; ELISA Titer: 1: 312500; Positive
Control: COLO205 cell lysate