

Product datasheet for **TA342123**

PHF19 Rabbit Polyclonal Antibody

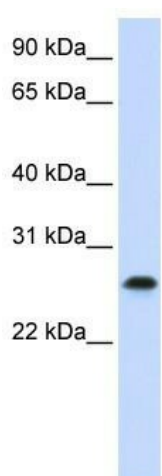
Product data:

Product Type:	Primary Antibodies
Applications:	WB
Recommended Dilution:	WB
Reactivity:	Human
Host:	Rabbit
Isotype:	IgG
Clonality:	Polyclonal
Immunogen:	The immunogen for anti-PHF19 antibody: synthetic peptide directed towards the C terminal of human PHF19. Synthetic peptide located within the following region: RRCIFALAVRVSLPSSVPASPASSSGADQRLPSQSLSSKQKGHTWALET
Formulation:	Liquid. Purified antibody supplied in 1x PBS buffer with 0.09% (w/v) sodium azide and 2% sucrose. <i>Note that this product is shipped as lyophilized powder to China customers.</i>
Concentration:	lot specific
Conjugation:	Unconjugated
Storage:	Store at -20°C as received.
Stability:	Stable for 12 months from date of receipt.
Predicted Protein Size:	22 kDa
Gene Name:	PHD finger protein 19
Database Link:	NP_001009936 Entrez Gene 26147 Human Q5T6S3
Background:	PHF19 contains 2 PHD-type zinc fingers. It acts as a transcriptional repressor. Isoform 1 and isoform 2 inhibit transcription from an HSV-tk promoter.
Synonyms:	MTF2L1; PCL3; TDRD19B
Note:	Immunogen Sequence Homology: Human: 100%; Yeast: 92%; Zebrafish: 79%
Protein Families:	Druggable Genome



[View online »](#)

Product images:



WB Suggested Anti-PHF19 Antibody Titration: 0.2-1 ug/ml; ELISA Titer: 1: 62500; Positive Control: Jurkat cell lysate