

Product datasheet for **TA342122**

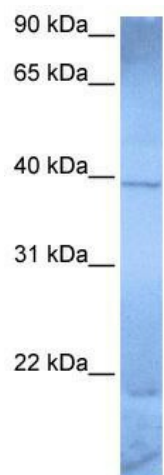
ZNF121 Rabbit Polyclonal Antibody

Product data:

Product Type:	Primary Antibodies
Applications:	WB
Recommended Dilution:	WB
Reactivity:	Human
Host:	Rabbit
Isotype:	IgG
Clonality:	Polyclonal
Immunogen:	The immunogen for anti-ZNF121 antibody: synthetic peptide directed towards the middle region of human ZNF121. Synthetic peptide located within the following region: LTKHVRIHTGEKPYECNECGKAYNRFYLLTEHFKTHTEEKPFECKVCGKS
Formulation:	Liquid. Purified antibody supplied in 1x PBS buffer with 0.09% (w/v) sodium azide and 2% sucrose.
Concentration:	lot specific
Conjugation:	Unconjugated
Storage:	Store at -20°C as received.
Stability:	Stable for 12 months from date of receipt.
Predicted Protein Size:	45 kDa
Gene Name:	zinc finger protein 121
Database Link:	NP_001008727 Entrez Gene 7675 Human P58317
Background:	ZNF121 belongs to the krueppel C2H2-type zinc-finger protein family. It contains 11 C2H2-type zinc fingers. ZNF121 may be involved in transcriptional regulation.
Synonyms:	D19S204; ZHC32; ZNF20
Note:	Immunogen Sequence Homology: Human: 100%; Rabbit: 86%; Rat: 83%; Horse: 83%; Mouse: 83%; Bovine: 83%



[View online »](#)

Product images:

WB Suggested Anti-ZNF121 Antibody Titration:
0.2-1 ug/ml; Positive Control: Jurkat cell lysate