

Product datasheet for **TA342117**

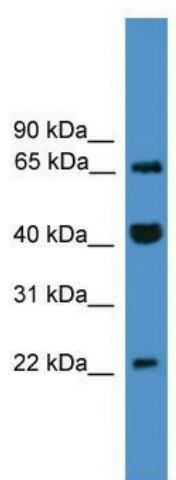
TCEAL6 Rabbit Polyclonal Antibody

Product data:

Product Type:	Primary Antibodies
Applications:	WB
Recommended Dilution:	WB
Reactivity:	Human
Host:	Rabbit
Isotype:	IgG
Clonality:	Polyclonal
Immunogen:	The immunogen for anti-TCEAL6 antibody: synthetic peptide directed towards the C terminal of human TCEAL6. Synthetic peptide located within the following region: LSSEEMMRECGDVSRAQEELRKKQKMGGFHWMQRDVQDPFAQGDNGVSGE
Formulation:	Liquid. Purified antibody supplied in 1x PBS buffer with 0.09% (w/v) sodium azide and 2% sucrose.
Concentration:	lot specific
Conjugation:	Unconjugated
Storage:	Store at -20°C as received.
Stability:	Stable for 12 months from date of receipt.
Predicted Protein Size:	20 kDa
Gene Name:	transcription elongation factor A like 6
Database Link:	NP_001006939 Entrez Gene 158931 Human
Background:	TCEAL6 may be involved in transcriptional regulation.
Synonyms:	Tceal3; WEX2
Note:	Immunogen Sequence Homology: Human: 100%



[View online »](#)

Product images:

WB Suggested Anti-TCEAL6 Antibody Titration:
0.2-1 ug/ml; ELISA Titer: 1: 312500; Positive
Control: Jurkat cell lysate