

Product datasheet for **TA342116**

TCEAL4 Rabbit Polyclonal Antibody

Product data:

Product Type:	Primary Antibodies
Applications:	WB
Recommended Dilution:	WB
Reactivity:	Human
Host:	Rabbit
Isotype:	IgG
Clonality:	Polyclonal
Immunogen:	The immunogen for anti-TCEAL4 antibody: synthetic peptide directed towards the middle region of human TCEAL4. Synthetic peptide located within the following region: GSETRAAGKRPAEDDVPRKAKRKTNKGLAHLKEYKEAIHDMNFSNEDMI
Formulation:	Liquid. Purified antibody supplied in 1x PBS buffer with 0.09% (w/v) sodium azide and 2% sucrose.
Concentration:	lot specific
Conjugation:	Unconjugated
Storage:	Store at -20°C as received.
Stability:	Stable for 12 months from date of receipt.
Predicted Protein Size:	25 kDa
Gene Name:	transcription elongation factor A like 4
Database Link:	NP_001006938 Entrez Gene 79921 Human Q96EI5



[View online »](#)

Background:

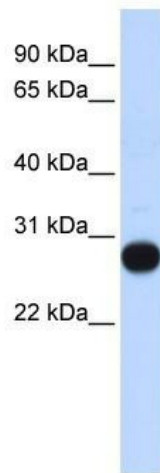
TCEAL4 is a member of The transcription elongation factor A (SII)-like (TCEAL) gene family. Members of This family contain TFA domains and may function as nuclear phosphoproteins that modulate transcription in a promoter context-dependent manner. Multiple family members are located on The X chromosome. This gene encodes a member of The transcription elongation factor A (SII)-like (TCEAL) gene family. Members of This family contain TFA domains and may function as nuclear phosphoproteins that modulate transcription in a promoter context-dependent manner. Multiple family members are located on The X chromosome. Alternative splicing occurs for This gene; however, The full-length nature of all transcript variants has not yet been described.

Synonyms:

NPD017; WEX7

Note:

Immunogen Sequence Homology: Horse: 100%; Human: 100%; Rabbit: 100%; Pig: 92%; Bovine: 92%; Rat: 90%; Dog: 85%; Mouse: 85%; Guinea pig: 85%

Product images:

WB Suggested Anti-TCEAL4 Antibody Titration:
0.2-1 ug/ml; ELISA Titer: 1: 312500; Positive
Control: Human Muscle