

Product datasheet for **TA342111**

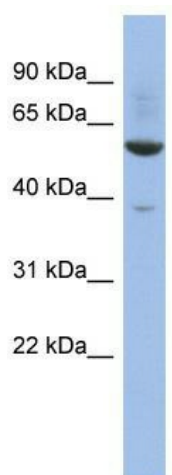
ZNF783 Rabbit Polyclonal Antibody

Product data:

Product Type:	Primary Antibodies
Applications:	WB
Recommended Dilution:	WB
Reactivity:	Human
Host:	Rabbit
Isotype:	IgG
Clonality:	Polyclonal
Immunogen:	The immunogen for anti-LOC155060 antibody: synthetic peptide directed towards the middle region of human LOC155060. Synthetic peptide located within the following region: EVGRPRMMGTGLPPYPEHLTSPLSPAQEELKEGQAPKQQDSEARVAPAG
Formulation:	Liquid. Purified antibody supplied in 1x PBS buffer with 0.09% (w/v) sodium azide and 2% sucrose.
Concentration:	lot specific
Conjugation:	Unconjugated
Storage:	Store at -20°C as received.
Stability:	Stable for 12 months from date of receipt.
Predicted Protein Size:	61 kDa
Database Link:	NP_001004302 Entrez Gene 155060 Human
Background:	The specific function of This protein remains unknown.
Synonyms:	DKFZp667J212; DKFZp762P2111; FLJ12914; FLJ16713; FLJ17438; FLJ17495; FLJ17722; FLJ25485
Note:	Immunogen Sequence Homology: Human: 100%



[View online »](#)

Product images:

WB Suggested Anti-LOC155060 Antibody
Titration: 0.2-1 ug/ml; ELISA Titer: 1: 12500;
Positive Control: THP-1 cell lysate