

Product datasheet for TA342110

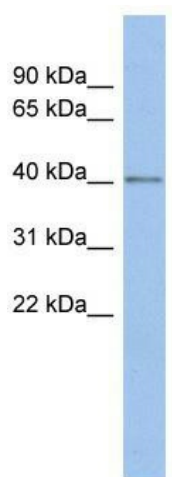
SPOPL Rabbit Polyclonal Antibody

Product data:

| | |
|-------------------------|--|
| Product Type: | Primary Antibodies |
| Applications: | WB |
| Recommended Dilution: | WB |
| Reactivity: | Human |
| Host: | Rabbit |
| Isotype: | IgG |
| Clonality: | Polyclonal |
| Immunogen: | The immunogen for anti-SPOPL antibody: synthetic peptide directed towards the middle region of human SPOPL. Synthetic peptide located within the following region: WNSNQATDIMETSGWKSMIQSHPHLVAEAFRALASACQPQFGIPRKRLKQ |
| Formulation: | Liquid. Purified antibody supplied in 1x PBS buffer with 0.09% (w/v) sodium azide and 2% sucrose. |
| Concentration: | lot specific |
| Conjugation: | Unconjugated |
| Storage: | Store at -20°C as received. |
| Stability: | Stable for 12 months from date of receipt. |
| Predicted Protein Size: | 45 kDa |
| Gene Name: | speckle type BTB/POZ protein like |
| Database Link: | NP_001001664 Entrez Gene 339745 Human Q6IQ16 |
| Background: | SPOPL belongs to The Tdpoz family. It contains 1 BTB (POZ) domain and 1 MATH domain. In complex with a cullin, SPOPL may act in ubiquitination and proteasomal degradation processes. |
| Synonyms: | BTBD33 |
| Note: | Immunogen Sequence Homology: Dog: 100%; Pig: 100%; Rat: 100%; Human: 100%; Mouse: 100%; Bovine: 100%; Rabbit: 100%; Guinea pig: 100%; Horse: 93%; Zebrafish: 86% |


[View online »](#)

Product images:



WB Suggested Anti-SPOPL Antibody Titration: 0.2-1 ug/ml; ELISA Titer: 1: 312500; Positive Control: PANC1 cell lysate