

Product datasheet for TA342109

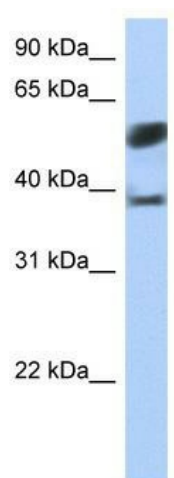
SPOPL Rabbit Polyclonal Antibody

Product data:

Product Type:	Primary Antibodies
Applications:	WB
Recommended Dilution:	WB
Reactivity:	Human
Host:	Rabbit
Isotype:	IgG
Clonality:	Polyclonal
Immunogen:	The immunogen for anti-SPOPL antibody: synthetic peptide directed towards the N terminal of human SPOPL. Synthetic peptide located within the following region: KGLDDESKDYLSLYLLLVSCKSEVRKFKFSLLNAKREETKAMESQRAY
Formulation:	Liquid. Purified antibody supplied in 1x PBS buffer with 0.09% (w/v) sodium azide and 2% sucrose.
Concentration:	lot specific
Conjugation:	Unconjugated
Storage:	Store at -20°C as received.
Stability:	Stable for 12 months from date of receipt.
Predicted Protein Size:	45 kDa
Gene Name:	speckle type BTB/POZ protein like
Database Link:	NP_001001664 Entrez Gene 339745 Human Q6IQ16
Background:	SPOPL belongs to The Tdpoz family. It contains 1 BTB (POZ) domain and 1 MATH domain. In complex with a cullin, SPOPL may act in ubiquitination and proteasomal degradation processes.
Synonyms:	BTBD33
Note:	Immunogen Sequence Homology: Dog: 100%; Pig: 100%; Rat: 100%; Horse: 100%; Human: 100%; Mouse: 100%; Bovine: 100%; Rabbit: 100%; Zebrafish: 100%; Guinea pig: 100%


[View online »](#)

Product images:



WB Suggested Anti-SPOPL Antibody Titration: 0.2-1 ug/ml; Positive Control: Jurkat cell lysate