

Product datasheet for **TA342105**

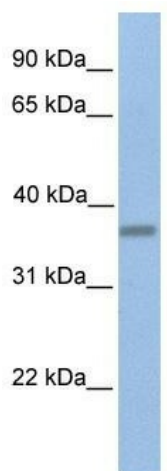
EMID1 Rabbit Polyclonal Antibody

Product data:

Product Type:	Primary Antibodies
Applications:	WB
Recommended Dilution:	WB
Reactivity:	Human
Host:	Rabbit
Isotype:	IgG
Clonality:	Polyclonal
Immunogen:	The immunogen for anti-EMID1 antibody: synthetic peptide directed towards the C terminal of human EMID1. Synthetic peptide located within the following region: TMIGLYPELGSAGPAGTGTPSLLRGKRGGHATNYRIVAPRSRDERG
Formulation:	Liquid. Purified antibody supplied in 1x PBS buffer with 0.09% (w/v) sodium azide and 2% sucrose.
Concentration:	lot specific
Conjugation:	Unconjugated
Storage:	Store at -20°C as received.
Stability:	Stable for 12 months from date of receipt.
Predicted Protein Size:	45 kDa
Gene Name:	EMI domain containing 1
Database Link:	NP_597712 Entrez Gene 129080 Human Q96A84
Background:	EMID1 contains 1 collagen-like domain and 1 EMI domain. The exact function of EMID1 remains unknown.
Synonyms:	EMI5; EMU1
Note:	Immunogen Sequence Homology: Dog: 100%; Rat: 100%; Horse: 100%; Human: 100%; Mouse: 100%; Bovine: 100%; Pig: 92%; Guinea pig: 92%
Protein Families:	Secreted Protein, Transmembrane



[View online »](#)

Product images:

WB Suggested Anti-EMID1 Antibody Titration: 0.2-1 ug/ml; Positive Control: 721_B cell lysate. EMID1 is supported by BioGPS gene expression data to be expressed in 721_B.