

Product datasheet for TA342102

GIMAP1 Rabbit Polyclonal Antibody

Product data:

Product Type:	Primary Antibodies
Applications:	WB
Recommended Dilution:	WB
Reactivity:	Human
Host:	Rabbit
Isotype:	IgG
Clonality:	Polyclonal
Immunogen:	The immunogen for anti-GIMAP1 antibody: synthetic peptide directed towards the N terminal of human GIMAP1. Synthetic peptide located within the following region: MGGRKMATDEENVYGLEENAQSRQESTRRLILVGRTGAGKSATGNSILGQ
Formulation:	Liquid. Purified antibody supplied in 1x PBS buffer with 0.09% (w/v) sodium azide and 2% sucrose. <i>Note that this product is shipped as lyophilized powder to China customers.</i>
Concentration:	lot specific
Conjugation:	Unconjugated
Storage:	Store at -20°C as received.
Stability:	Stable for 12 months from date of receipt.
Predicted Protein Size:	34 kDa
Gene Name:	GTPase, IMAP family member 1
Database Link:	NP_570115 Entrez Gene 170575 Human Q8WWP7
Background:	GIMAP1 belonging toThe GTP-binding superfamily and toThe immuno-associated nucleotide (IAN) subfamily of nucleotide-binding proteins.This gene encodes a protein belonging toThe GTP-binding superfamily and toThe immuno-associated nucleotide (IAN) subfamily of nucleotide-binding proteins. In humans,The IAN subfamily genes are located in a cluster at 7q36.1.
Synonyms:	HIMAP1; IAN2; IMAP1; IMAP38

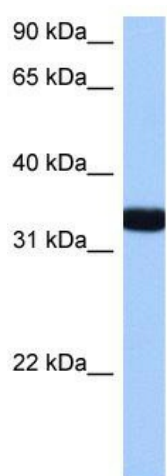


[View online »](#)

Note: Immunogen Sequence Homology: Human: 100%

Protein Families: Transmembrane

Product images:



WB Suggested Anti-GIMAP1 Antibody Titration:
0.2-1 ug/ml; Positive Control: HeLa cell lysate