

Product datasheet for **TA342101**

TOR2A Rabbit Polyclonal Antibody

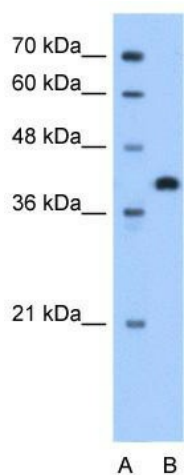
Product data:

Product Type:	Primary Antibodies
Applications:	WB
Recommended Dilution:	WB
Reactivity:	Human
Host:	Rabbit
Isotype:	IgG
Clonality:	Polyclonal
Immunogen:	The immunogen for anti-TOR2A antibody: synthetic peptide directed towards the N terminal of human TOR2A. Synthetic peptide located within the following region: GLECDLAQHLAGQHAKALVVKALKAFVRDPAPTKPLVLSLHGWTGTGKS
Formulation:	Liquid. Purified antibody supplied in 1x PBS buffer with 0.09% (w/v) sodium azide and 2% sucrose. <i>Note that this product is shipped as lyophilized powder to China customers.</i>
Concentration:	lot specific
Conjugation:	Unconjugated
Storage:	Store at -20°C as received.
Stability:	Stable for 12 months from date of receipt.
Predicted Protein Size:	36 kDa
Gene Name:	torsin family 2 member A
Database Link:	NP_001078816 Entrez Gene 27433 Human Q5JU69
Background:	The function remains unknown.
Synonyms:	TORP1
Note:	Immunogen Sequence Homology: Dog: 100%; Pig: 100%; Rat: 100%; Human: 100%; Mouse: 100%; Bovine: 100%; Guinea pig: 100%; Horse: 93%
Protein Families:	Secreted Protein, Transmembrane



[View online »](#)

Product images:



WB Suggested Anti-TOR2A Antibody Titration:
1.25 ug/ml; Positive Control: HepG2 cell lysate