

## Product datasheet for **TA342099**

### COLEC12 Rabbit Polyclonal Antibody

#### Product data:

Product Type:	Primary Antibodies
Applications:	WB
Recommended Dilution:	WB
Reactivity:	Human
Host:	Rabbit
Isotype:	IgG
Clonality:	Polyclonal
Immunogen:	The immunogen for anti-COLEC12 antibody: synthetic peptide directed towards the N terminal of human COLEC12. Synthetic peptide located within the following region: AISTNSELSTFRSDILDRLRQQLEITEKTSKNKDTLEKLQASGDALVDRQ
Formulation:	Liquid. Purified antibody supplied in 1x PBS buffer with 0.09% (w/v) sodium azide and 2% sucrose. <i>Note that this product is shipped as lyophilized powder to China customers.</i>
Concentration:	lot specific
Conjugation:	Unconjugated
Storage:	Store at -20°C as received.
Stability:	Stable for 12 months from date of receipt.
Predicted Protein Size:	81 kDa
Gene Name:	collectin subfamily member 12
Database Link:	<a href="#">NP_569057</a> <a href="#">Entrez Gene 81035 Human</a> <a href="#">Q5KU26</a>



[View online »](#)

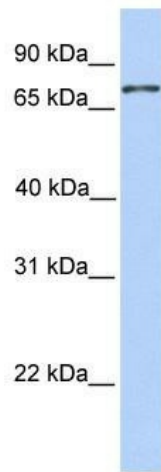
**Background:** COLEC12 is a member of the C-lectin family, proteins that possess collagen-like sequences and carbohydrate recognition domains. This protein is a scavenger receptor, a cell surface glycoprotein that can bind to carbohydrate antigens on microorganisms facilitating their recognition and removal. In addition, these receptors can recognize oxidized phospholipids so they may also participate in removing oxidatively damaged or apoptotic cells. This gene encodes a member of the C-lectin family, proteins that possess collagen-like sequences and carbohydrate recognition domains. This protein is a scavenger receptor, a cell surface glycoprotein that can bind to carbohydrate antigens on microorganisms facilitating their recognition and removal. In addition, these receptors can recognize oxidized phospholipids so they may also participate in removing oxidatively damaged or apoptotic cells.

**Synonyms:** CLP1; NSR2; SCARA4; SRCL

**Note:** Immunogen Sequence Homology: Dog: 100%; Pig: 100%; Human: 100%; Mouse: 100%; Bovine: 100%; Rabbit: 100%; Rat: 93%; Horse: 93%; Guinea pig: 93%

**Protein Families:** Transmembrane

### Product images:



WB Suggested Anti-COLEC12 Antibody Titration: 0.2-1 ug/ml; Positive Control: 721\_B cell lysate