

Product datasheet for **TA342097**

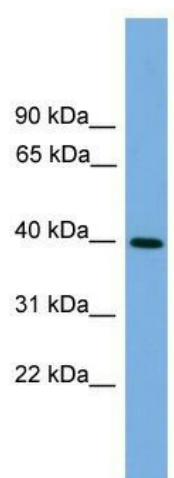
ITLN2 Rabbit Polyclonal Antibody

Product data:

Product Type:	Primary Antibodies
Applications:	WB
Recommended Dilution:	WB
Reactivity:	Human
Host:	Rabbit
Isotype:	IgG
Clonality:	Polyclonal
Immunogen:	The immunogen for anti-ITLN2 antibody: synthetic peptide directed towards the middle region of human ITLN2. Synthetic peptide located within the following region: TVGDRWSSQQGNKADYPEGDGNWANYNTFGSAEAATSDDYKNPGGYDIQA
Formulation:	Liquid. Purified antibody supplied in 1x PBS buffer with 0.09% (w/v) sodium azide and 2% sucrose. <i>Note that this product is shipped as lyophilized powder to China customers.</i>
Concentration:	lot specific
Conjugation:	Unconjugated
Storage:	Store at -20°C as received.
Stability:	Stable for 12 months from date of receipt.
Predicted Protein Size:	36 kDa
Gene Name:	intelectin 2
Database Link:	NP_543154 Entrez Gene 142683 Human Q8WWU7
Background:	ITLN2 may play a role inThe defense system against pathogens.
Synonyms:	HL-2; HL2
Note:	Immunogen Sequence Homology: Human: 100%; Bovine: 100%; Pig: 93%; Rat: 93%; Mouse: 93%; Sheep: 93%; Rabbit: 93%; Guinea pig: 93%; Horse: 86%
Protein Families:	Druggable Genome, Secreted Protein, Transmembrane



[View online »](#)

Product images:

WB Suggested Anti-ITLN2 Antibody Titration: 0.2-1 ug/ml; ELISA Titer: 1: 62500; Positive Control: HepG2 cell lysate