

Product datasheet for **TA342095**

Diffuse panbronchiolitis critical region protein 1 (DPCR1) Rabbit Polyclonal Antibody

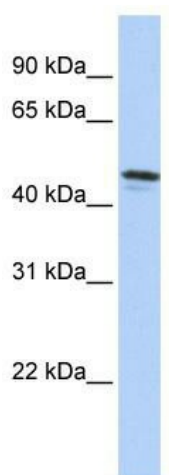
Product data:

Product Type:	Primary Antibodies
Applications:	WB
Recommended Dilution:	WB
Reactivity:	Human
Host:	Rabbit
Isotype:	IgG
Clonality:	Polyclonal
Immunogen:	The immunogen for anti-DPCR1 antibody: synthetic peptide directed towards the C terminal of human DPCR1. Synthetic peptide located within the following region: SHLNKTEVTHQVPTGSFTLITSRTLSSITSEATGNESHPLYLNKDGSKG
Formulation:	Liquid. Purified antibody supplied in 1x PBS buffer with 0.09% (w/v) sodium azide and 2% sucrose. <i>Note that this product is shipped as lyophilized powder to China customers.</i>
Concentration:	lot specific
Conjugation:	Unconjugated
Storage:	Store at -20°C as received.
Stability:	Stable for 12 months from date of receipt.
Predicted Protein Size:	55 kDa
Gene Name:	diffuse panbronchiolitis critical region 1
Database Link:	NP_543146 Entrez Gene 135656 Human Q3MIW9
Background:	The exact function of DPCR1 remains unknown.
Synonyms:	PBLT
Note:	Immunogen Sequence Homology: Human: 100%
Protein Families:	Transmembrane



[View online »](#)

Product images:



WB Suggested Anti-DPCR1 Antibody Titration:
0.2-1 ug/ml; ELISA Titer: 1: 12500; Positive
Control: HepG2 cell lysate