

## Product datasheet for **TA342094**

### FAM210B Rabbit Polyclonal Antibody

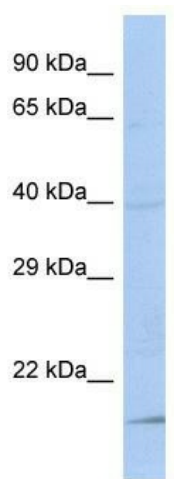
#### Product data:

Product Type:	Primary Antibodies
Applications:	WB
Recommended Dilution:	WB
Reactivity:	Human
Host:	Rabbit
Isotype:	IgG
Clonality:	Polyclonal
Immunogen:	The immunogen for Anti-FAM210B antibody is: synthetic peptide directed towards the N-terminal region of Human FAM210B. Synthetic peptide located within the following region: AGLLALLGPAGRVGARVRPRATWLLGATAPCAPPLALALLPPRLDARLL
Formulation:	Liquid. Purified antibody supplied in 1x PBS buffer with 0.09% (w/v) sodium azide and 2% sucrose. <i>Note that this product is shipped as lyophilized powder to China customers.</i>
Concentration:	lot specific
Purification:	Affinity Purified
Conjugation:	Unconjugated
Storage:	Store at -20°C as received.
Stability:	Stable for 12 months from date of receipt.
Predicted Protein Size:	20 kDa
Gene Name:	family with sequence similarity 210 member B
Database Link:	<a href="#">NP_543011</a> <a href="#">Entrez Gene 116151 Human</a> <a href="#">Q96KR6</a>
Background:	The function of This protein remains unknown.
Synonyms:	5A3; C20orf108; dj1167H4.1
Note:	Immunogen Sequence Homology: Dog: 100%; Rat: 100%; Human: 100%; Bovine: 93%; Horse: 92%; Rabbit: 92%; Pig: 86%; Mouse: 77%



[View online »](#)

Protein Families: Transmembrane

**Product images:**

Host: Rabbit; Target Name: FAM210B; Sample  
Tissue: MCF7 Whole Cell lysates; Antibody  
Dilution: 1.0 ug/ml