

## Product datasheet for **TA342093**

### TMC2 Rabbit Polyclonal Antibody

#### Product data:

Product Type:	Primary Antibodies
Applications:	WB
Recommended Dilution:	WB
Reactivity:	Human
Host:	Rabbit
Isotype:	IgG
Clonality:	Polyclonal
Immunogen:	The immunogen for anti-TMC2 antibody: synthetic peptide directed towards the middle region of human TMC2. Synthetic peptide located within the following region: YCWCWDLEAGFPSYAEFDISGNVLGLIFNQGMIVMGSFYAPGLVGINVL
Formulation:	Liquid. Purified antibody supplied in 1x PBS buffer with 0.09% (w/v) sodium azide and 2% sucrose. <i>Note that this product is shipped as lyophilized powder to China customers.</i>
Concentration:	lot specific
Conjugation:	Unconjugated
Storage:	Store at -20°C as received.
Stability:	Stable for 12 months from date of receipt.
Predicted Protein Size:	102 kDa
Gene Name:	transmembrane channel like 2
Database Link:	<a href="#">NP_542789</a> <a href="#">Entrez Gene 117532 Human</a> <a href="#">Q8TDI7</a>



[View online »](#)

**Background:** TMC2 is considered a member of transmembrane proteins family. The specific function of this gene is unknown; however, expression in the inner ear suggests that it may be crucial for normal auditory function. This gene is considered a member of a gene family predicted to encode transmembrane proteins. The specific function of this gene is unknown; however, expression in the inner ear suggests that it may be crucial for normal auditory function. Mutations in this gene may underlie hereditary disorders of balance and hearing.

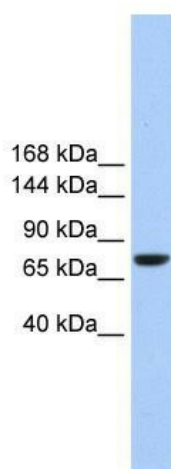
PRIMARYREFSEQ\_SPAN PRIMARY\_IDENTIFIER PRIMARY\_SPAN COMP 1-382 AF417580.2 1-382 383-569 DA769512.1 96-282 570-859 DA769512.1 286-575 860-2736 AF417580.2 860-2736 2737-3169 AL049712.12 30165-30597 c

**Synonyms:** C20orf145

**Note:** Immunogen Sequence Homology: Dog: 100%; Pig: 100%; Rat: 100%; Horse: 100%; Human: 100%; Mouse: 100%; Bovine: 100%; Zebrafish: 100%; Guinea pig: 100%; Rabbit: 85%

**Protein Families:** Transmembrane

## Product images:



WB Suggested Anti-TMC2 Antibody Titration: 0.2-1 ug/ml; Positive Control: Hela cell lysate