

## Product datasheet for **TA342091**

### Collagen XI alpha 2 (COL11A2) Rabbit Polyclonal Antibody

#### Product data:

Product Type:	Primary Antibodies
Applications:	WB
Recommended Dilution:	WB
Reactivity:	Human
Host:	Rabbit
Isotype:	IgG
Clonality:	Polyclonal
Immunogen:	The immunogen for anti-COL11A2 antibody: synthetic peptide directed towards the N terminal of human COL11A2. Synthetic peptide located within the following region: TADRFQAE EY GEGG TDPPEG PYDYTYGYGDDYREETELGPALSAETAHSG
Formulation:	Liquid. Purified antibody supplied in 1x PBS buffer with 0.09% (w/v) sodium azide and 2% sucrose. <i>Note that this product is shipped as lyophilized powder to China customers.</i>
Concentration:	lot specific
Conjugation:	Unconjugated
Storage:	Store at -20°C as received.
Stability:	Stable for 12 months from date of receipt.
Predicted Protein Size:	144 kDa
Gene Name:	collagen type XI alpha 2
Database Link:	<a href="#">NP_542411</a> <a href="#">Entrez Gene 1302 Human P13942</a>
Background:	This gene encodes one of the two alpha chains of type XI collagen, a minor fibrillar collagen. It is located on chromosome 6 very close to but separate from the gene for retinoid X receptor beta. Type XI collagen is a heterotrimer but the third alpha chain
Synonyms:	DFNA13; DFNB53; FBCG2; HKE5; PARP; STL3
Note:	Immunogen Sequence Homology: Dog: 100%; Human: 100%; Mouse: 92%; Rabbit: 92%; Pig: 91%; Bovine: 91%

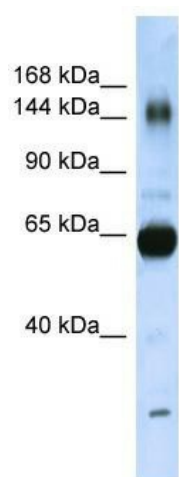


[View online »](#)

Protein Families: Druggable Genome, Transmembrane

Protein Pathways: ECM-receptor interaction, Focal adhesion

### Product images:



WB Suggested Anti-COL11A2 Antibody Titration:  
0.2-1 ug/ml; ELISA Titer: 1: 312500; Positive  
Control: Human Placenta