

## Product datasheet for **TA342088**

### **B3GALT6 Rabbit Polyclonal Antibody**

#### **Product data:**

<b>Product Type:</b>	Primary Antibodies
<b>Applications:</b>	WB
<b>Recommended Dilution:</b>	WB
<b>Reactivity:</b>	Human
<b>Host:</b>	Rabbit
<b>Isotype:</b>	IgG
<b>Clonality:</b>	Polyclonal
<b>Immunogen:</b>	The immunogen for anti-B3GALT6 antibody: synthetic peptide directed towards the N terminal of human B3GALT6. Synthetic peptide located within the following region: EREQARHGDL LLLPALRDAYENLTAKVLAMLAWLDEHVAFEFVLKADDDSD
<b>Formulation:</b>	Liquid. Purified antibody supplied in 1x PBS buffer with 0.09% (w/v) sodium azide and 2% sucrose. <i>Note that this product is shipped as lyophilized powder to China customers.</i>
<b>Concentration:</b>	lot specific
<b>Conjugation:</b>	Unconjugated
<b>Storage:</b>	Store at -20°C as received.
<b>Stability:</b>	Stable for 12 months from date of receipt.
<b>Predicted Protein Size:</b>	37 kDa
<b>Gene Name:</b>	beta-1,3-galactosyltransferase 6
<b>Database Link:</b>	<a href="#">NP_542172</a> <a href="#">Entrez Gene 126792 Human</a> <a href="#">Q96L58</a>
<b>Background:</b>	B3GALT6 (Beta-1,3-galactosyltransferase) transfers galactose from UDP-galactose to substrates with a terminal beta-linked galactose residue. It has a preference for galactose-beta-1,4-xylose that is found in the linker region of glycosaminoglycans, such as heparan sulfate and chondroitin sulfate. It has no activity towards substrates with terminal glucosamine or galactosamine residues.
<b>Synonyms:</b>	beta3GalT6; EDSP2; SEMDJL1



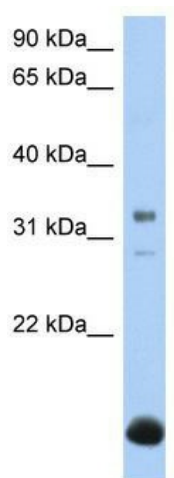
[View online »](#)

**Note:** Immunogen Sequence Homology: Rat: 100%; Human: 100%; Mouse: 100%; Dog: 93%; Pig: 93%; Bovine: 93%; Guinea pig: 93%; Zebrafish: 77%

**Protein Families:** Transmembrane

**Protein Pathways:** Chondroitin sulfate biosynthesis, Heparan sulfate biosynthesis, Metabolic pathways

**Product images:**



WB Suggested Anti-B3GALT6 Antibody Titration:  
0.2-1 ug/ml; Positive Control: Human Liver