

## Product datasheet for **TA342087**

### NADH Dehydrogenase subunit 6 Rabbit Polyclonal Antibody

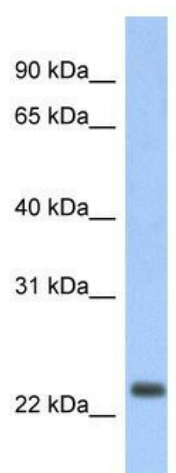
#### Product data:

Product Type:	Primary Antibodies
Applications:	WB
Recommended Dilution:	WB
Reactivity:	Human
Host:	Rabbit
Isotype:	IgG
Clonality:	Polyclonal
Immunogen:	The immunogen for anti-ND6 antibody: synthetic peptide directed towards the middle region of human ND6. Synthetic peptide located within the following region: DGWVVVNFNSVGSWMIYEGEGSGLIREDPIGAGALYDYGRWLWVTGWT
Formulation:	Liquid. Purified antibody supplied in 1x PBS buffer with 0.09% (w/v) sodium azide and 2% sucrose.
Concentration:	lot specific
Conjugation:	Unconjugated
Storage:	Store at -20°C as received.
Stability:	Stable for 12 months from date of receipt.
Predicted Protein Size:	19 kDa
Database Link:	<a href="#">NP_776062</a> <a href="#">Entrez Gene 4541 Human</a>
Background:	The exact function of ND6 remains unknown.
Note:	Immunogen Sequence Homology: Human: 100%; Pig: 93%
Protein Families:	Transmembrane
Protein Pathways:	Metabolic pathways, Oxidative phosphorylation, Parkinson's disease



[View online »](#)

Product images:



WB Suggested Anti-ND6 Antibody Titration: 0.2-1 ug/ml; Positive Control: Human Lung