

Product datasheet for **TA342084**

Aquaporin 10 (AQP10) Rabbit Polyclonal Antibody

Product data:

Product Type:	Primary Antibodies
Applications:	WB
Recommended Dilution:	WB
Reactivity:	Human
Host:	Rabbit
Isotype:	IgG
Clonality:	Polyclonal
Immunogen:	The immunogen for anti-AQP10 antibody: synthetic peptide directed towards the C terminal of human AQP10. Synthetic peptide located within the following region: VGATVGTATYQLLVALHHPEGPEPAQDLVSAQHKASELETPASAQMLECK
Formulation:	Liquid. Purified antibody supplied in 1x PBS buffer with 0.09% (w/v) sodium azide and 2% sucrose.
Concentration:	lot specific
Conjugation:	Unconjugated
Storage:	Store at -20°C as received.
Stability:	Stable for 12 months from date of receipt.
Predicted Protein Size:	32 kDa
Gene Name:	aquaporin 10
Database Link:	NP_536354 Entrez Gene 89872 Human Q96PS8



[View online »](#)

Background:

AQP10 is a member of the aquaglyceroporin family of integral membrane proteins. Members of this family function as water-permeable channels in the epithelia of organs that absorb and excrete water. AQP10 was shown to function as a water-selective channel, and could also permeate neutral solutes such as glycerol and urea. This gene encodes a member of the aquaglyceroporin family of integral membrane proteins. Members of this family function as water-permeable channels in the epithelia of organs that absorb and excrete water. This protein was shown to function as a water-selective channel, and could also permeate neutral solutes such as glycerol and urea.

Synonyms:

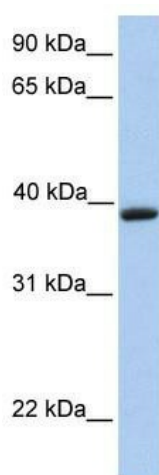
AQPA_HUMAN

Note:

Immunogen Sequence Homology: Human: 100%; Rat: 79%; Bovine: 75%; Rabbit: 75%

Protein Families:

Transmembrane

Product images:


WB Suggested Anti-AQP10 Antibody Titration:
0.2-1 ug/ml; Positive Control: Jurkat cell lysate