

## Product datasheet for **TA342083**

### Antxr2 Rabbit Polyclonal Antibody

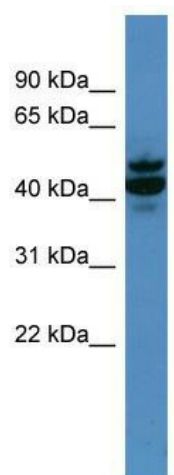
#### Product data:

Product Type:	Primary Antibodies
Applications:	WB
Recommended Dilution:	WB
Reactivity:	Mouse
Host:	Rabbit
Isotype:	IgG
Clonality:	Polyclonal
Immunogen:	The immunogen for anti-Antxr2 antibody: synthetic peptide corresponding to a region of Mouse. Synthetic peptide located within the following region: GLVPSYAENEAKKSRSLGASVYCVGLDFEQQLERIASDKDQVFPVKGG
Formulation:	Liquid. Purified antibody supplied in 1x PBS buffer with 0.09% (w/v) sodium azide and 2% sucrose. <i>Note that this product is shipped as lyophilized powder to China customers.</i>
Concentration:	lot specific
Conjugation:	Unconjugated
Storage:	Store at -20°C as received.
Stability:	Stable for 12 months from date of receipt.
Predicted Protein Size:	53 kDa
Gene Name:	anthrax toxin receptor 2
Database Link:	<a href="#">NP_598499</a> <a href="#">Entrez Gene 71914 Mouse</a> <a href="#">Q6DFX2</a>
Background:	Antxr2 is necessary for cellular interactions with laminin andThe extracellular matrix.
Synonyms:	CMG-2; CMG2; FLJ31074; ISH; JHF; MGC45856; MGC111533
Note:	Immunogen Sequence Homology: Dog: 100%; Pig: 100%; Rat: 100%; Horse: 100%; Human: 100%; Mouse: 100%; Bovine: 100%; Guinea pig: 100%; Rabbit: 93%



[View online »](#)

## Product images:



WB Suggested Anti-Antxr2 Antibody Titration: 0.2-1 ug/ml; ELISA Titer: 1: 312500; Positive Control: Mouse Liver