

Product datasheet for **TA342081**

GALNTL2 (GALNT15) Rabbit Polyclonal Antibody

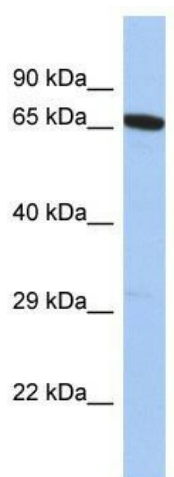
Product data:

Product Type:	Primary Antibodies
Applications:	WB
Recommended Dilution:	WB
Reactivity:	Human
Host:	Rabbit
Isotype:	IgG
Clonality:	Polyclonal
Immunogen:	The immunogen for Anti-GALNT15 antibody is: synthetic peptide directed towards the N-terminal region of Human GALNT15. Synthetic peptide located within the following region: LMLGCVLMMVAMLHPPHHTLHQTVTAQASKHSPEARYRLDFGESQDWLE
Formulation:	Liquid. Purified antibody supplied in 1x PBS buffer with 0.09% (w/v) sodium azide and 2% sucrose. <i>Note that this product is shipped as lyophilized powder to China customers.</i>
Concentration:	lot specific
Purification:	Affinity Purified
Conjugation:	Unconjugated
Storage:	Store at -20°C as received.
Stability:	Stable for 12 months from date of receipt.
Predicted Protein Size:	67 kDa
Gene Name:	polypeptide N-acetylgalactosaminyltransferase 15
Database Link:	NP_473451 Entrez Gene 117248 Human Q8N3T1
Background:	The function of This protein remains unknown.
Synonyms:	GALNACT15; GALNT7; GALNT13; GALNTL2; PIH5; pp-GalNAc-T15
Note:	Immunogen Sequence Homology: Human: 93%; Rat: 79%; Mouse: 79%
Protein Families:	Transmembrane



[View online »](#)

Protein Pathways: Metabolic pathways, O-Glycan biosynthesis

Product images:

Host: Rabbit; Target Name: GALNT15; Sample
Tissue: PANC1 Whole Cell lysates; Antibody
Dilution: 1.0 ug/ml