

## Product datasheet for **TA342075**

### LY108 (SLAMF6) Rabbit Polyclonal Antibody

#### Product data:

Product Type:	Primary Antibodies
Applications:	WB
Recommended Dilution:	WB
Reactivity:	Human
Host:	Rabbit
Isotype:	IgG
Clonality:	Polyclonal
Immunogen:	The immunogen for anti-SLAMF6 antibody: synthetic peptide directed towards the N terminal of human SLAMF6. Synthetic peptide located within the following region: EIHVTNPKQGKRLNFTQSYSLQLSNLKMEDTGSYRAQISTKTSAKLSSYT
Formulation:	Liquid. Purified antibody supplied in 1x PBS buffer with 0.09% (w/v) sodium azide and 2% sucrose. <i>Note that this product is shipped as lyophilized powder to China customers.</i>
Concentration:	lot specific
Conjugation:	Unconjugated
Storage:	Store at -20°C as received.
Stability:	Stable for 12 months from date of receipt.
Predicted Protein Size:	34 kDa
Gene Name:	SLAM family member 6
Database Link:	<a href="#">NP_443163</a> <a href="#">Entrez Gene 114836 Human</a> <a href="#">Q96DU3</a>



[View online »](#)

**Background:**

SLAMF6 is a type I transmembrane protein, belonging to the CD2 subfamily of the immunoglobulin superfamily. SLAMF6 is expressed on Natural killer (NK), T, and B lymphocytes. It undergoes tyrosine phosphorylation and associates with the Src homology 2 domain-containing protein (SH2D1A) as well as with SH2 domain-containing phosphatases (SHPs). It may function as a coreceptor in the process of NK cell activation. It can also mediate inhibitory signals in NK cells from X-linked lymphoproliferative patients. The protein encoded by this gene is a type I transmembrane protein, belonging to the CD2 subfamily of the immunoglobulin superfamily. This encoded protein is expressed on Natural killer (NK), T, and B lymphocytes. It undergoes tyrosine phosphorylation and associates with the Src homology 2 domain-containing protein (SH2D1A) as well as with SH2 domain-containing phosphatases (SHPs). It may function as a coreceptor in the process of NK cell activation. It can also mediate inhibitory signals in NK cells from X-linked lymphoproliferative patients. Publication Note: This RefSeq record includes a subset of the publications that are available for this gene. Please see the Entrez Gene record to access additional publications.

**Synonyms:**

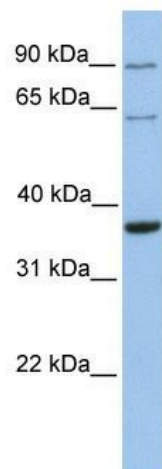
CD352; KALI; KAL1b; Ly108; NTB-A; NTBA; SF2000

**Note:**

Immunogen Sequence Homology: Human: 100%

**Protein Families:**

Druggable Genome, Transmembrane

**Product images:**

WB Suggested Anti-SLAMF6 Antibody Titration:  
0.2-1 ug/ml; Positive Control: Human heart