

Product datasheet for TA342073

Galnt13 Rabbit Polyclonal Antibody

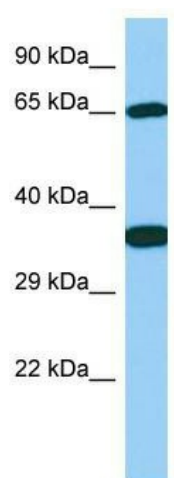
Product data:

Product Type:	Primary Antibodies
Applications:	WB
Recommended Dilution:	WB
Reactivity:	Rat
Host:	Rabbit
Isotype:	IgG
Clonality:	Polyclonal
Immunogen:	The immunogen for Anti-Galnt13 antibody is: synthetic peptide directed towards the C-terminal region of Rat Galnt13. Synthetic peptide located within the following region: EFKDFFYIISPGVVKVDYGDVSVRKTLENLKCKPFSWYLENIYPDSQIP
Formulation:	Liquid. Purified antibody supplied in 1x PBS buffer with 0.09% (w/v) sodium azide and 2% sucrose. <i>Note that this product is shipped as lyophilized powder to China customers.</i>
Concentration:	lot specific
Conjugation:	Unconjugated
Storage:	Store at -20°C as received.
Stability:	Stable for 12 months from date of receipt.
Predicted Protein Size:	61 kDa
Gene Name:	polypeptide N-acetylgalactosaminyltransferase 13
Database Link:	NP_954537 Entrez Gene 311039 Rat Q6UE39
Background:	Human homolog is a member of a family of proteins which catalyzeThe transfer of N-acetyl-alpha-d-galactosamine to polypeptides such as mucin which initiates O-Linked glycosylation.
Synonyms:	FLJ16031; FLJ41157; GalNAc-T13; H_NH0187G20.1; KIAA1918; MGC119459; MGC119461; WUGSC:H_NH0187G20.1
Note:	Immunogen Sequence Homology: Dog: 100%; Rat: 100%; Human: 100%; Mouse: 100%; Bovine: 100%; Rabbit: 100%; Horse: 93%; Zebrafish: 79%



[View online »](#)

Product images:



Host: Rabbit; Target Name: Galnt13; Sample
Tissue: Rat Stomach lysates; Antibody Dilution:
1.0 ug/ml