

## Product datasheet for **TA342070**

### SLITRK1 Rabbit Polyclonal Antibody

#### Product data:

Product Type:	Primary Antibodies
Applications:	WB
Recommended Dilution:	WB
Reactivity:	Human
Host:	Rabbit
Isotype:	IgG
Clonality:	Polyclonal
Immunogen:	The immunogen for anti-SLITRK1 antibody: synthetic peptide directed towards the N terminal of human SLITRK1. Synthetic peptide located within the following region: CDLLSLKEWLENIPKNALIGRVCEAPTRLQGKDLNETTEQDLCPLKNRV
Formulation:	Liquid. Purified antibody supplied in 1x PBS buffer with 0.09% (w/v) sodium azide and 2% sucrose.
Concentration:	lot specific
Conjugation:	Unconjugated
Storage:	Store at -20°C as received.
Stability:	Stable for 12 months from date of receipt.
Predicted Protein Size:	78 kDa
Gene Name:	SLIT and NTRK like family member 1
Database Link:	<a href="#">NP_443142</a> <a href="#">Entrez Gene 114798 Human</a> <a href="#">Q96PX8</a>



[View online »](#)

**Background:**

Members of the SLITRK family, such as SLITRK1, are integral membrane proteins with 2 N-terminal leucine-rich repeat (LRR) domains similar to those of SLIT proteins. Most SLITRKs, but not SLITRK1, also have C-terminal regions that share homology with neurotrophin receptors. SLITRKs are expressed predominantly in neural tissues and have neurite-modulating activity. Members of the SLITRK family, such as SLITRK1, are integral membrane proteins with 2 N-terminal leucine-rich repeat (LRR) domains similar to those of SLIT proteins (see SLIT1; MIM 603742). Most SLITRKs, but not SLITRK1, also have C-terminal regions that share homology with neurotrophin receptors (see NTRK1; MIM 191315). SLITRKs are expressed predominantly in neural tissues and have neurite-modulating activity (Aruga et al., 2003 [PubMed 14557068]). [supplied by OMIM]. Publication Note: This RefSeq record includes a subset of the publications that are available for this gene. Please see the Entrez Gene record to access additional publications.

**Synonyms:**

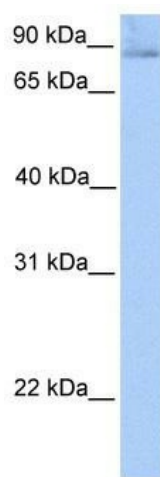
LRRC12; TTM

**Note:**

Immunogen Sequence Homology: Dog: 100%; Pig: 100%; Rat: 100%; Horse: 100%; Human: 100%; Mouse: 100%; Bovine: 100%; Rabbit: 100%; Guinea pig: 100%; Zebrafish: 85%

**Protein Families:**

Transmembrane

**Product images:**

WB Suggested Anti-SLITRK1 Antibody Titration:  
0.2-1 ug/ml; Positive Control: Human Lung