

Product datasheet for **TA342069**

TMEM132B Rabbit Polyclonal Antibody

Product data:

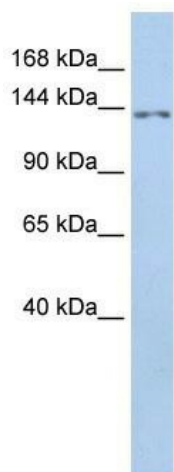
Product Type:	Primary Antibodies
Applications:	WB
Recommended Dilution:	WB
Reactivity:	Human
Host:	Rabbit
Isotype:	IgG
Clonality:	Polyclonal
Immunogen:	The immunogen for anti-TMEM132B antibody: synthetic peptide directed towards the middle region of human TMEM132B. Synthetic peptide located within the following region: VQEWFHRGTPVVGQEESTNKSTTPQSPMEGKNLLKSGGPDAFTSFPTQGK
Formulation:	Liquid. Purified antibody supplied in 1x PBS buffer with 0.09% (w/v) sodium azide and 2% sucrose. <i>Note that this product is shipped as lyophilized powder to China customers.</i>
Concentration:	lot specific
Conjugation:	Unconjugated
Storage:	Store at -20°C as received.
Stability:	Stable for 12 months from date of receipt.
Predicted Protein Size:	119 kDa
Gene Name:	transmembrane protein 132B
Database Link:	NP_443139 Entrez Gene 114795 Human Q14DG7
Background:	TMEM132B single-pass type I membrane protein. It belongs toThe TMEM132 family.The exact function of TMEM132B is not known.
Synonyms:	KIAA1786; KIAA1906
Note:	Immunogen Sequence Homology: Human: 100%; Horse: 93%; Dog: 86%; Bovine: 86%; Mouse: 79%; Pig: 77%; Guinea pig: 77%



[View online »](#)

Protein Families: Transmembrane

Product images:



WB Suggested Anti-TMEM132B Antibody
Titration: 0.2-1 ug/ml; ELISA Titer: 1: 62500;
Positive Control: HeLa cell lysate